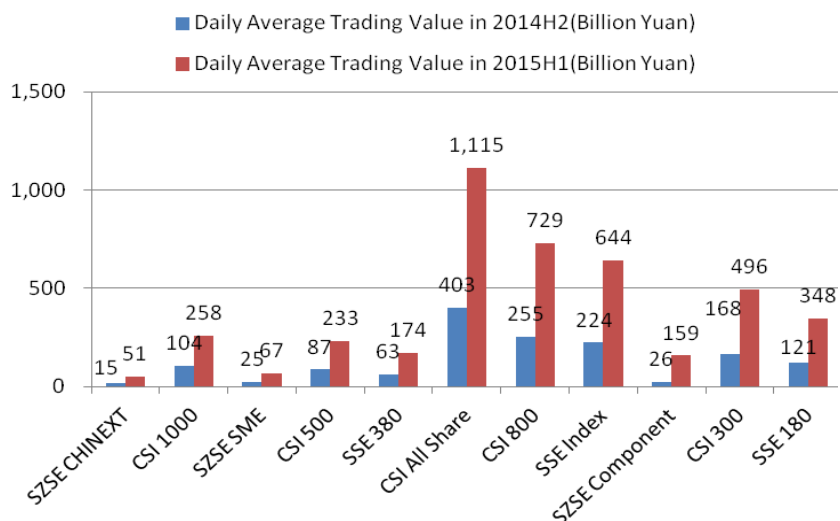


2015 Semi-Annual CSI&SSE A-Share Index Review

A-Share

Market Trading Value Change

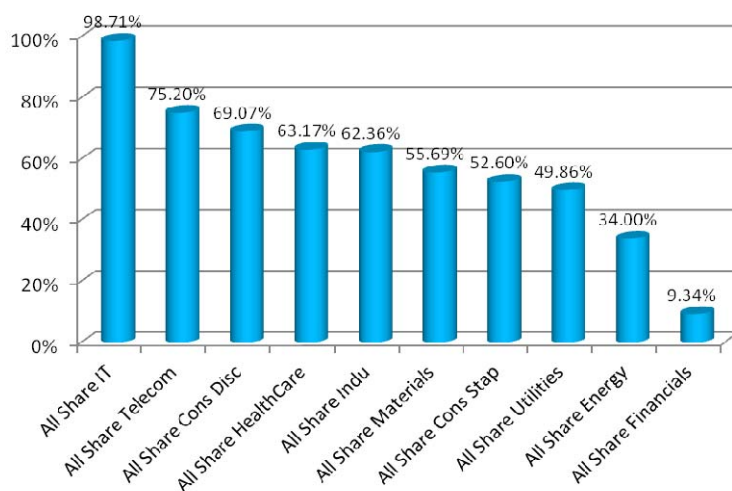
With the growing market comes along, the index volume of transaction increases dramatically, the average daily trading value of SSE composite index is 643.7 billion yuan in the first half year, the chain relative ratio rose by 287%.



Performance of CSI Sector Indices

The sector indices show significant differentiation in the first half of 2015, information technology and telecom industry have the highest growth rate. CSI All-Share IT sector index and CSI All-Share Telecom index rose by 98.71%、75.20% respectively in the first half year. CSI All-Share Financials index increased by 9.34%, which ranks the bottom.

Performance of CSI All Share Sector Indices



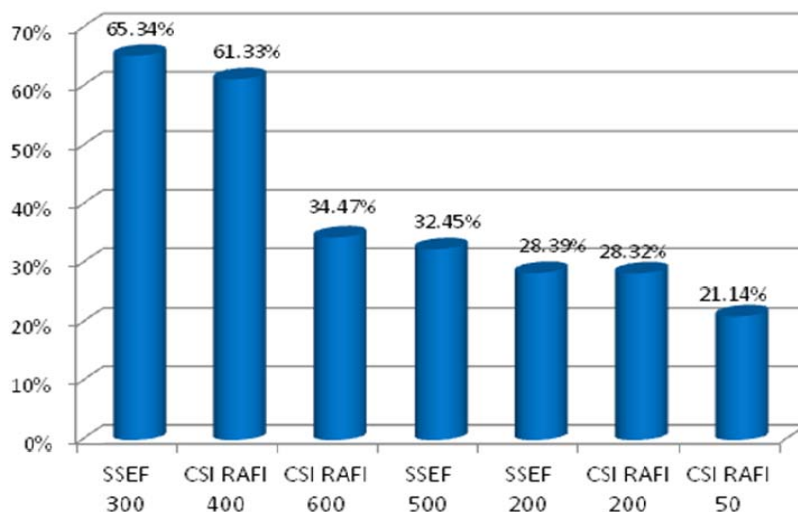
Performance of SSE Sector Indices

Among SSE Sector Index Series, SSE IT Index has the highest growth rate of 91.45%.

Performance of Fundamental Indices

The fundamental indices with small cap stocks as major samples such as SSE F300, CSI RAFI 400 have better growth performance rate. In the first half year, those indices rose by 65.34%、61.33% respectively.

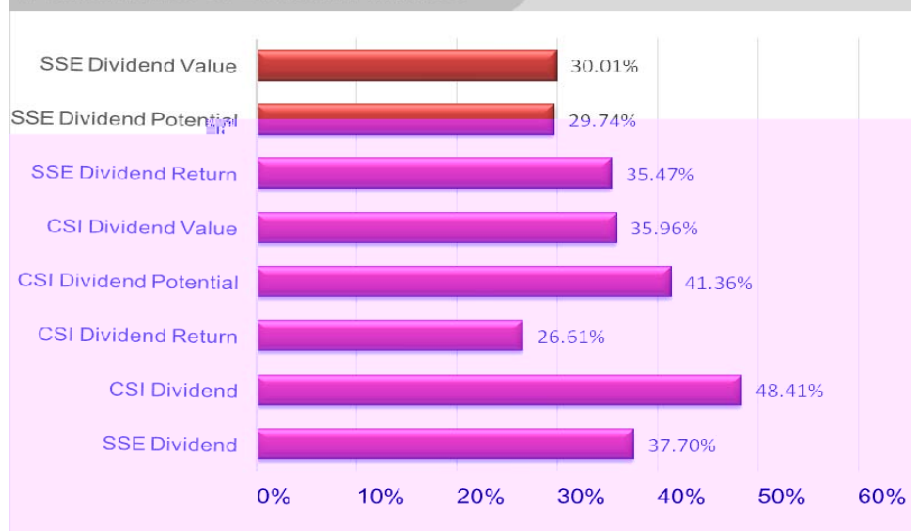
Performance of Fundamental Indices



Performance of Dividend Indices

In the first half year, the investment growth stock was very popular, dividend indices performed generally. CSI Dividend Index and SSE Dividend Index increased by 48.41%、37.70% respectively.

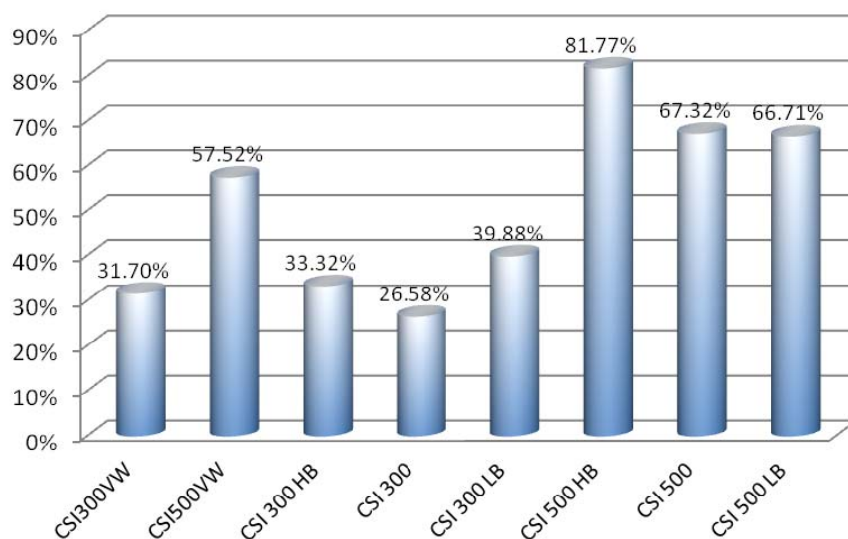
Performance of Dividend Indices



Performance of Beta and Volatility indices

In the first half year, CSI500 Low Beta Index increases slightly lower than mother index, but CSI500 High Beta Index increases obviously higher. Both HIS300 High & Low Beta Indexes increase higher than mother index in the first half year.

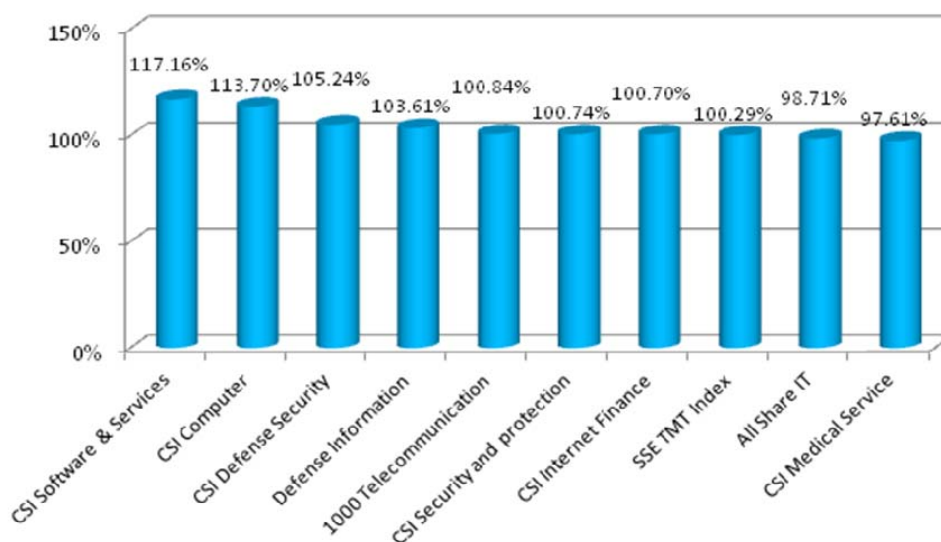
Performance of Beta&Volatility Indices



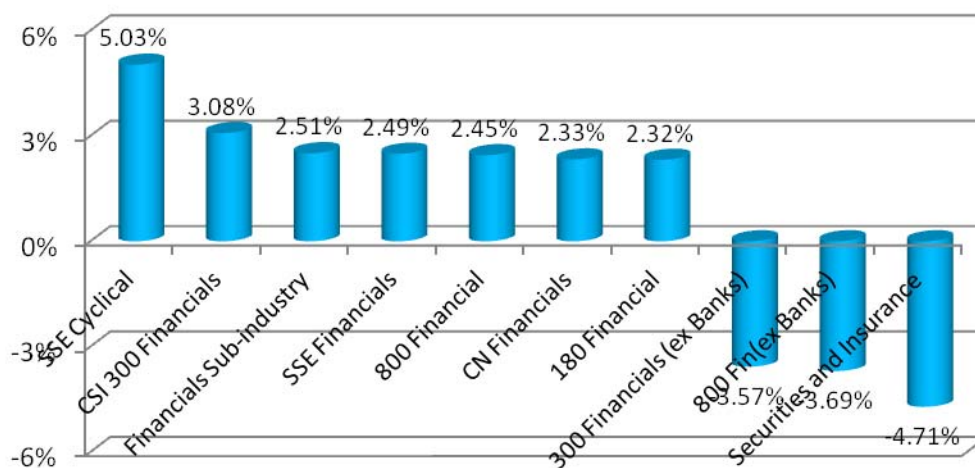
Performance of Thematic indices

The most increased thematic indices are Internet, IT, war industry indices and so on in 2015.

Performance of the Top 10 Thematic Indices



Due to the big adjustment in the end of June, many financial indices decreased instead, and real-estate and resources indices increased very slowly.



Appendix: Performance of Csi&Sse A-Share Indices in 2015H1

Index Code	Index Name	Base Date	Base Index	Launch Date	Index Type	Index Value	Performance in 2015H1
930655	CSI500 L2XI	20090630	3500	20150616	Stock Index	10937.32	155.08%
L11630	300 Multi Retail	20041231	1000	20090616	Stock Index	16603.28	140.82%
H30215	All Share Leisure Pr	20041231	1000	20130715	Stock Index	7837.694	134.47%
H30223	All Share Airlines	20041231	1000	20130715	Stock Index	3404.943	122.99%
L11617	300 Airlines	20041231	1000	20090616	Stock Index	3257.056	122.99%
H30220	All Share Internet S	20041231	1000	20130715	Stock Index	12547.65	122.50%
H30203	All Share IT Service	20041231	1000	20130715	Stock Index	11027.29	120.46%
H30446	1000 IT	20041231	1000	20141017	Stock Index	16382.78	120.09%
930601	CSI Software & Ser	20041231	1000	20150310	Stock Index	14586.96	117.16%
H30182	All Share Software &	20041231	1000	20130715	Stock Index	16228.24	116.75%
930651	CSI Computer	20041231	1000	20150605	Stock Index	12590.99	113.70%
H30219	All Share Packaging	20041231	1000	20130715	Stock Index	4891.924	111.50%
H30202	All Share Software	20041231	1000	20130715	Stock Index	20739.95	111.11%
H30097	CSI IT Dividend	20051230	1000	20130702	Stock Index	20250.42	109.82%
H30543	CSI Defense Securi	20081231	1000	20150129	Stock Index	8471.191	105.24%
930617	Defense Informatior	20091231	1000	20150416	Stock Index	3956.915	103.61%
H30537	CSI Taojin 100	20091231	1000	20150121	Stock Index	9567.327	101.21%
H30447	1000 Telecommunic	20041231	1000	20141017	Stock Index	6558.375	100.84%
930649	CSI Security and pri	20120629	1000	20150624	Stock Index	3844.415	100.74%
H30591	CSI Internet Financ	20120629	1000	20150210	Stock Index	4814.785	100.70%
H50039	SSE TMT Index	20110630	1000	20131225	Stock Index	3435.288	100.29%
H30178	All Share Health Ca	20041231	1000	20130715	Stock Index	19825.46	100.29%
H30207	All Share Computer:	20041231	1000	20130715	Stock Index	6433.005	99.87%
H30368	CSI High & New Ter	20140630	1000	20140717	Stock Index	2439.67	99.69%
930661	CSSW Internet Fina	20111230	1000	20150624	Stock Index	4349.107	99.65%
H30359	Transforming Growt	20051230	1000	20140711	Stock Index	29495.68	99.06%
000993	All Share IT	20041231	1000	20110802	Stock Index	8719.843	98.71%
399989	CSI Medical Service	20041231	1000	20141031	Stock Index	12513.87	97.61%
399994	CSI Info-security	20101231	1000	20150312	Stock Index	2627.316	97.60%
930624	Health Care Big Dat	20081231	1000	20150428	Stock Index	11175.14	97.42%
H30217	All Share Health Ca	20041231	1000	20130715	Stock Index	19571.81	97.37%
930658	Auto Aftermarket	20111230	1000	20150611	Stock Index	3315.69	96.39%
H50035	SSE Intelligent Tran	20120629	1000	20130826	Stock Index	3368.36	95.94%
H30098	CSI Telecom Serv. I	20051230	1000	20130702	Stock Index	10023.49	95.28%
930615	Small & Mid Cap He	20041231	1000	20150408	Stock Index	19544.61	94.65%
H30026	800 Software & Ser	20041231	1000	20121221	Stock Index	8183.139	94.41%
H30257	CSI 500 IT	20041231	1000	20131106	Stock Index	10346.79	94.14%
399996	CSI Smart Home	20120629	1000	20140917	Stock Index	4202.091	93.69%
000983	China IP Index	20060630	1000	20110617	Stock Index	13453.79	93.59%
000826	CSI Poes Dividend	20090630	1000	20120720	Stock Index	4091.097	93.51%
000077	SSE Info Tech EW	20031231	1000	20100818	Stock Index	7819.412	92.76%
H30535	Internet	20120629	1000	20150112	Stock Index	3940.048	92.27%
930600	CSI Industry 4.0	20120629	1000	20150310	Stock Index	3854.071	91.93%
000039	SSE Info technology	20031231	1000	20090109	Stock Index	6127.896	91.45%
H30442	1000 Consumer	20041231	1000	20141017	Stock Index	11675.41	90.55%
H30193	All Share Textiles &	20041231	1000	20130715	Stock Index	7196.002	90.25%
H30443	1000 Consumer Sta	20041231	1000	20141017	Stock Index	10974.15	89.97%
H50056	SSE Smart Home	20120629	1000	20140917	Stock Index	4386.513	89.86%
H50008	180 Information Tec	20031231	1000	20120629	Stock Index	4515.618	89.68%
H30590	CSI Robot	20101231	1000	20150210	Stock Index	2107.61	89.44%
000840	CSI ZheJiang Privat	20041231	1000	20121109	Stock Index	11540.17	89.26%
H30141	CSI Intelligent Trans	20120629	1000	20130826	Stock Index	3535.25	89.13%
000852	CSI 1000	20041231	1000	20141017	Stock Index	11381.47	88.83%
000998	CSI TMT Index	20110630	1000	20111108	Stock Index	3138.841	88.73%

Index Code	Index Name	Base Date	Base Index	Launch Date	Index Type	Index Value	Performance in 2015H1
930616	CSI Culture & Sport	20120629	1000	20150519	Stock Index	3983.832	88.63%
000111	380 Information	20031231	1000	20110613	Stock Index	8541.315	88.48%
H30183	All Share Hardware	20041231	1000	20130715	Stock Index	6836.275	87.84%
H30372	CSI Security	20120629	1000	20140721	Stock Index	3677.527	87.78%
H30318	TMT 150	20110630	1000	20140415	Stock Index	2779.873	86.61%
H30444	1000 Health Care	20041231	1000	20141017	Stock Index	16722.31	86.14%
H30172	All Share Cons Dur	20041231	1000	20130715	Stock Index	8348.258	85.81%
000133	SSE 150	20031231	1000	20120420	Stock Index	8486.191	85.63%
000839	CSI ZheJiang Comp	20041231	1000	20121109	Stock Index	9775.292	85.61%
H30190	All Share Electronic	20041231	1000	20130715	Stock Index	8541.795	85.54%
000107	380 Cons Discretior	20031231	1000	20110613	Stock Index	8199.427	84.42%
L11618	300 Marine	20041231	1000	20090616	Stock Index	2800.801	84.38%
950074	SSE Internet Financ	20120629	1000	20150529	Stock Index	4633.7	84.26%
399971	CSI Media	20101231	1000	20140415	Stock Index	3366.8	84.00%
000935	CSI IT	20041231	1000	20090703	Stock Index	5865.632	83.93%
930635	intelligent agriculture	20101231	1000	20150508	Stock Index	2211.249	83.70%
H30439	1000 Energy	20041231	1000	20141017	Stock Index	964.1597	83.06%
H30196	All Share Household	20041231	1000	20130715	Stock Index	9293.169	82.75%
399970	Mobile Internet	20120630	1000	20140505	Stock Index	3834.805	82.73%
H30028	800 Semi. & Equipm	20041231	1000	20121221	Stock Index	3835.869	82.70%
H30170	All Share Commerci	20041231	1000	20130715	Stock Index	12920.22	82.64%
H30013	800 Commer. Serv.	20041231	1000	20121221	Stock Index	9095.277	82.60%
399993	CSWD Biotechnolog	20091231	1000	20150508	Stock Index	3203.989	82.39%
H11053	CSI Textile Stimulus	20081231	1000	20090722	Stock Index	2980.404	82.18%
930633	CSI Tourism	20081231	1000	20150508	Stock Index	5813.04	82.02%
000830	CSI 500 HB	20041231	1000	20120806	Stock Index	7440.08	81.77%
H30208	All Share Specialty I	20041231	1000	20130715	Stock Index	15783.6	81.69%
H30253	CSI 500 Consumer	20041231	1000	20131106	Stock Index	7772.35	81.17%
L11520	300 IT Software	20041231	1000	20090616	Stock Index	2532.576	81.15%
000938	CSI POEs	20090630	1000	20090825	Stock Index	2994.62	81.11%
L11510	300 Retail	20041231	1000	20090616	Stock Index	9069.776	80.89%
H30068	CSI Culture	20120629	1000	20130326	Stock Index	3967.933	80.86%
000112	380 Telecommunicat	20031231	1000	20110613	Stock Index	5711.006	80.66%
H30138	CSI Smart Cities	20120629	1000	20130826	Stock Index	3593.596	80.56%
L11608	300 Defense	20041231	1000	20090616	Stock Index	16492.35	80.50%
H30255	CSI 500 Health Carr	20041231	1000	20131106	Stock Index	17265.82	80.00%
H30440	1000 Materials	20041231	1000	20141017	Stock Index	8568.565	79.50%
H30213	All Share Aerospace	20041231	1000	20130715	Stock Index	16835.87	78.24%
H30016	800 Cons. Dura. & /	20041231	1000	20121221	Stock Index	8460.042	78.14%
H30027	800 Hardware and E	20041231	1000	20121221	Stock Index	5469.517	77.96%
930640	CSWD Asset Reorg	20111230	1000	20150508	Stock Index	2912.912	77.80%
H30212	All Share Biotechno	20041231	1000	20130715	Stock Index	13648.91	77.68%
H30184	All Share Semicond	20041231	1000	20130715	Stock Index	3999.297	77.54%
H30095	CSI Health Care Div	20051230	1000	20130702	Stock Index	15767.61	77.47%
H30185	All Share Communic	20041231	1000	20130715	Stock Index	7161.141	77.41%
H30365	CSI Culture & Sport	20131231	1000	20140721	Stock Index	2135.095	77.07%
000822	CSI 500 Dividend	20041231	1000	20120720	Stock Index	11739.82	77.01%
H30216	All Share Marine	20041231	1000	20130715	Stock Index	3444.186	76.99%
399967	CSI National Defens	20041231	1000	20131226	Stock Index	17184.46	76.99%
H30175	All Share Retailing	20041231	1000	20130715	Stock Index	8124.894	76.84%
H30197	All Share Multiline R	20041231	1000	20130715	Stock Index	7750.023	76.65%
H30093	CSI Cons. Disc. Div	20051230	1000	20130702	Stock Index	14257.92	76.17%
399959	Defence Index	20110630	1000	20110830	Stock Index	2342.278	76.14%
930652	CSI Electronics	20041231	1000	20150605	Stock Index	7188.033	75.97%
L11649	300 Computers	20041231	1000	20090616	Stock Index	4024.765	75.93%
H50028	SSE IT Dividend	20051230	1000	20130702	Stock Index	11963.68	75.66%

Index Code	Index Name	Base Date	Base Index	Launch Date	Index Type	Index Value	Performance in 2015H1
399973	CSI Defense	20110630	1000	20140415	Stock Index	2607.493	75.64%
930623	Entertainment Big D	20110131	1000	20150428	Stock Index	3449.384	75.56%
H30441	1000 Industrials	20041231	1000	20141017	Stock Index	11870.46	75.36%
H11056	CSI Electronic & IT	20081231	1000	20090722	Stock Index	4428.296	75.28%
000994	All Share Telecom	20041231	1000	20110802	Stock Index	7576.74	75.20%
H30173	All Share Consumer	20041231	1000	20130715	Stock Index	10044.31	75.01%
H30091	CSI Materials Divide	20051230	1000	20130702	Stock Index	7414.623	74.90%
H30194	All Share Auto Com	20041231	1000	20130715	Stock Index	8277.352	74.88%
H30445	1000 Financials	20041231	1000	20141017	Stock Index	10769.63	74.84%
H30263	CSI Tencent&Ji'an	20130518	1000	20131118	Stock Index	2868.481	74.73%
399802	500 SZSE	20041231	1000	20120905	Stock Index	8123.574	74.44%
000915	CSI 300 Info techno	20041231	1000	20070702	Stock Index	2790.575	74.38%
000997	Consumer 360	20041231	1000	20111111	Stock Index	11518.46	74.35%
930629	CSSW Emerging He	20081231	1000	20150508	Stock Index	9922.039	74.32%
H50029	SSE Telecom Serv.	20051230	1000	20130702	Stock Index	9854.138	74.30%
H30007	CSI Strategic Inforr	20051230	1000	20121220	Stock Index	7582.522	74.27%
000040	SSE Telecom Svc	20031231	1000	20090109	Stock Index	3716.975	74.12%
H30019	800 Retailing	20041231	1000	20121221	Stock Index	7400.29	73.81%
H50017	SSE Strategic Inforr	20051230	1000	20121220	Stock Index	7099.91	73.76%
H30187	All Share Chemicals	20041231	1000	20130715	Stock Index	5974.192	73.76%
930660	CSSW Sport	20081231	1000	20150624	Stock Index	4529.855	73.75%
H30206	All Share Forest Prc	20041231	1000	20130715	Stock Index	4270.155	73.70%
000957	300 Transportation	20041231	1000	20100317	Stock Index	2538.167	73.65%
H30189	All Share Electrical I	20041231	1000	20130715	Stock Index	8848.785	73.20%
L11625	300 Textiles & Appa	20041231	1000	20090616	Stock Index	3767.681	73.19%
H30524	500 ERC	20041231	1000	20150106	Stock Index	10722.34	72.99%
H30363	CSI RAFI 500	20041231	1000	20140722	Stock Index	10455.13	72.99%
H30258	CSI 500 Telecommu	20041231	1000	20131106	Stock Index	5418.11	72.50%
000945	CN Transportation	20041231	1000	20091028	Stock Index	2930.982	72.36%
H30014	800 Transportation	20041231	1000	20121221	Stock Index	3006.408	72.36%
L11521	300 IT Hardware	20041231	1000	20090616	Stock Index	3182.384	72.35%
930650	CSI Ocean Econom	20091231	1000	20150529	Stock Index	2335.949	72.35%
H50038	SSE Smart Cities	20120629	1000	20130826	Stock Index	3658.825	72.24%
H30204	All Share Hotels & L	20041231	1000	20130715	Stock Index	9596.241	72.16%
H30221	All Share Multi-Utiliti	20041231	1000	20130715	Stock Index	7050.318	72.02%
H11060	CSI Logistics Stimul	20081231	1000	20090722	Stock Index	2705.774	71.76%
000978	Health Care 100	20041231	1000	20110318	Stock Index	17204.51	71.67%
000020	SSE Medium Comp	20071228	1000	20080512	Stock Index	2032.192	71.42%
H30353	500R Growth	20041231	1000	20140609	Stock Index	8421.437	71.31%
930659	Energy Internet	20131231	1000	20150611	Stock Index	2197.773	71.25%
H30526	500SER	20041231	1000	20150106	Stock Index	10908.96	71.13%
930654	CSI Leisure & Enter	20041231	1000	20150605	Stock Index	9176.833	70.92%
000958	Innovative & Growin	20091231	1000	20100324	Stock Index	1786.452	70.80%
000982	CSI 500 EW	20041231	1000	20110613	Stock Index	10494.92	70.71%
000137	SSE 380 HB	20031231	1000	20120806	Stock Index	8660.595	70.53%
H30542	CSI Sport	20120629	1000	20150209	Stock Index	3789.402	70.26%
000078	SSE Telecom Svs E	20031231	1000	20100818	Stock Index	3502.455	70.25%
H50068	380 ERC	20041231	1000	20150316	Stock Index	12479.74	70.23%
H30087	500 Dynamic	20041231	1000	20130509	Stock Index	7071.326	69.95%
000091	SSE Wealth Mid-Srr	20041231	1000	20110406	Stock Index	12814.75	69.88%
000141	380 Dynamic	20031231	1000	20130208	Stock Index	6949.71	69.58%
930648	CSI Inteligent Const	20120629	1000	20150605	Stock Index	3154.984	69.35%
000153	SSE Poes Dividenc	20090630	1000	20120720	Stock Index	3425.835	69.15%
H50053	SSE Mobile Internet	20120629	1000	20140711	Stock Index	3549.174	69.09%
000989	All Share Cons Disc	20041231	1000	20110802	Stock Index	7671.085	69.07%
399976	New Energy Vehicle	20111231	1000	20141128	Stock Index	2604.48	68.95%

Index Code	Index Name	Base Date	Base Index	Launch Date	Index Type	Index Value	Performance in 2015H1
H30351	500 Growth	20041231	1000	20140609	Stock Index	9349.689	68.71%
H30017	800 Consumer Serv	20041231	1000	20121221	Stock Index	8022.019	68.62%
000027	180 Transportation	20020628	1000	20081215	Stock Index	1736.554	68.56%
000073	SSE Cons Disc EW	20031231	1000	20100818	Stock Index	4487.119	67.75%
H30171	All Share Transport	20041231	1000	20130715	Stock Index	3169.079	67.70%
000150	SSE 380 Dividend	20041231	1000	20120720	Stock Index	11068.35	67.63%
930611	Small & Medium SC	20131231	1000	20150407	Stock Index	2491.475	67.56%
000115	SSE 380 Equal Wei	20031231	1000	20110812	Stock Index	10593.22	67.53%
000119	380R Growth	20031231	1000	20111018	Stock Index	6871.503	67.45%
000905	CSI 500	20041231	1000	20070115	Stock Index	8906.02	67.32%
L11507	300 Cons Durables	20041231	1000	20090616	Stock Index	9446.071	67.08%
399992	CSWD M&A	20111230	1000	20150508	Stock Index	2945.918	67.05%
000831	CSI 500 LB	20041231	1000	20120806	Stock Index	12906.02	66.71%
H30209	All Share Building P	20041231	1000	20130715	Stock Index	7195.75	66.69%
H30448	1000 Utilities	20041231	1000	20141017	Stock Index	7617.237	66.27%
H50036	SSE National Defen	20041231	1000	20131226	Stock Index	14827.06	65.90%
H30222	All Share Road & R	20041231	1000	20130715	Stock Index	6433.138	65.83%
000138	SSE 380 LB	20031231	1000	20120806	Stock Index	7906.963	65.81%
H30373	CSI Baifa 100	20081231	1000	20140730	Stock Index	17239.1	65.77%
000045	SSE SMALL CAP	20031231	1000	20090703	Stock Index	6949.917	65.63%
H30176	All Share Food Reta	20041231	1000	20130715	Stock Index	13293.91	65.59%
000109	380 Health Care	20031231	1000	20110613	Stock Index	13163.07	65.48%
000099	SSEF 300	20041231	1000	20110701	Stock Index	10466.77	65.34%
H30166	All Share Machinery	20041231	1000	20130715	Stock Index	10940.16	65.31%
000005	Commercial Index	19930430	1358.78	19930503	Stock Index	6198.18	65.21%
000108	380 Cons Staples	20031231	1000	20110613	Stock Index	10254.52	64.89%
H30088	500 Stability	20041231	1000	20130509	Stock Index	11269.72	64.43%
H30080	300 Consumption S	20041231	1000	20130509	Stock Index	7599.068	64.35%
H30079	300 Information Ser	20041231	1000	20130509	Stock Index	3087.009	64.12%
000097	SSE High-End Equip	20041231	1000	20110524	Stock Index	13731.7	63.95%
000009	SSE 380	20031231	1000	20101129	Stock Index	7971.066	63.79%
000813	Chemicals Sub-indu	20041231	1000	20120411	Stock Index	4352.32	63.75%
L11623	300 Household Dur	20041231	1000	20090616	Stock Index	10986.24	63.40%
L11631	300 Specialty Retail	20051230	1000	20090616	Stock Index	8995.126	63.29%
000973	CSI Leading Techn	20031231	1000	20110104	Stock Index	9384.937	63.25%
000991	All Share HealthCar	20041231	1000	20110802	Stock Index	12149.48	63.17%
H30254	CSI 500 Consumer	20041231	1000	20131106	Stock Index	10997.1	63.07%
H30354	500R Value	20041231	1000	20140609	Stock Index	9811.289	63.06%
H30140	CSI Urbanization Tr	20120629	1000	20130826	Stock Index	2982.24	62.89%
000121	Health Care theme	20031231	1000	20111018	Stock Index	12923.27	62.86%
000975	QianJiang 30	20091231	1000	20140102	Stock Index	1576.048	62.77%
930599	CSI High-End Equip	20041231	1000	20150302	Stock Index	7312.587	62.38%
000988	All Share Indu	20041231	1000	20110802	Stock Index	5964.421	62.36%
399705	SZSE Midstream	20021231	1000	20111018	Stock Index	3465.138	62.30%
H50032	SSE Urbanization T	20120629	1000	20130826	Stock Index	2985.553	62.09%
399706	SZSE Downstream	20021231	1000	20111018	Stock Index	6587.8	61.92%
000808	Health Care	20041231	1000	20120217	Stock Index	11421.91	61.77%
H30252	CSI 500 Industrials	20041231	1000	20131106	Stock Index	9204.769	61.63%
000966	CSI RAFI 400	20041231	1000	20100602	Stock Index	9363.167	61.33%
H50024	SSE Cons. Disc. Div	20051230	1000	20130702	Stock Index	12684.73	61.18%
930606	CSI Steel	20081231	1000	20150331	Stock Index	2084.5	61.14%
000132	SSE 100	20031231	1000	20120420	Stock Index	8593.906	60.97%
000802	500 SSE	20041231	1000	20111108	Stock Index	9146.482	60.93%
000842	CSI 800 Equal Weic	20041231	1000	20121221	Stock Index	8355.961	60.90%
000120	380R Value	20031231	1000	20111018	Stock Index	9251.195	60.79%
H30536	CSI High-Speed Ra	20121231	1000	20150120	Stock Index	3303.674	60.75%

Index Code	Index Name	Base Date	Base Index	Launch Date	Index Type	Index Value	Performance in 2015H1
H30029	800 Commu. Equipr	20041231	1000	20121221	Stock Index	4937.829	60.69%
H30201	All Share Trading C	20041231	1000	20130715	Stock Index	7884.527	60.66%
H30592	CSI New Energy	20111231	1000	20150210	Stock Index	2267.755	60.56%
000079	SSE Utilities EW	20031231	1000	20100818	Stock Index	4401.273	60.48%
000931	CSI Cons Disc	20041231	1000	20090703	Stock Index	7036.301	60.47%
000067	SSE Emerging	20031231	1000	20100430	Stock Index	9910.931	60.34%
H30169	All Share Capital Gc	20041231	1000	20130715	Stock Index	8508.898	60.29%
H30099	CSI Utilities Dividen	20051230	1000	20130702	Stock Index	6213.836	60.26%
H50055	SSE Grand Agricultr	20131231	1000	20140722	Stock Index	1895.256	60.23%
L11613	300 Machinery	20041231	1000	20090616	Stock Index	8834.164	60.22%
H30020	800 Food & Stap. R	20041231	1000	20121221	Stock Index	12752.02	60.16%
000122	agriculture theme	20110630	1000	201111018	Stock Index	1630.874	60.09%
930634	Rural land reform a	20101231	1000	20150508	Stock Index	1698.078	60.07%
000117	380 Growth	20031231	1000	201111018	Stock Index	7893.915	59.98%
000075	SSE Health Care E	20031231	1000	20100818	Stock Index	9962.665	59.72%
H30256	CSI 500 Financials	20041231	1000	20131106	Stock Index	8186.397	59.61%
H30179	All Share Pharmace	20041231	1000	20130715	Stock Index	11698.91	59.53%
H30371	Environmental Gove	20111230	1000	20140721	Stock Index	3451.853	59.52%
000838	Innovative & Value	20091231	1000	20120926	Stock Index	2308.263	59.48%
000128	SSE380FI	20031231	1000	20120109	Stock Index	9582.299	59.35%
H30192	All Share Food Proc	20041231	1000	20130715	Stock Index	7528.353	59.30%
H30174	All Share Media	20041231	1000	20130715	Stock Index	8588.341	59.25%
000941	CN New Energy	20081231	1000	20091028	Stock Index	2254.522	58.98%
000142	380 Stability	20031231	1000	20130208	Stock Index	8695.42	58.85%
000131	SSE High and New	20110630	1000	20120210	Stock Index	2393.434	58.78%
H30344	CSI Health Industry	20111230	1000	20140606	Stock Index	2397.778	58.69%
000964	CSI Emerging	20041231	1000	20100430	Stock Index	11004.64	58.56%
399990	CSI Coal EW	20081231	1000	20150121	Stock Index	2873.019	58.54%
000106	380 Industrials	20031231	1000	20110613	Stock Index	9323.906	58.51%
H30343	CSI Old-Age Industr	20041231	1000	20140606	Stock Index	10506.98	58.47%
H50054	SSE Culture & Spor	20131231	1000	20140721	Stock Index	2000.839	58.35%
000827	CSI EP	20111230	1000	20120925	Stock Index	2408.713	58.29%
H30352	500 Value	20041231	1000	20140609	Stock Index	10764.82	58.10%
000936	CSI Telecom	20041231	1000	20090703	Stock Index	6168.07	57.89%
000130	SSE380VW	20031231	1000	20120109	Stock Index	12086.09	57.87%
000804	CSI500VW	20041231	1000	20120109	Stock Index	13765.66	57.52%
930613	Non-Cyclical POEs	20091231	1000	20150407	Stock Index	1715.474	57.40%
H50058	SSE 380 Momentun	20041231	1000	20141113	Stock Index	8731.948	57.25%
930612	Mixed-Ownership R	20131231	1000	20150407	Stock Index	2635.231	57.17%
H30188	All Share Pharmace	20041231	1000	20130715	Stock Index	11481.49	57.04%
H30259	CSI 500 Utilities	20041231	1000	20131106	Stock Index	6056.781	56.89%
000072	SSE Industrials EW	20031231	1000	20100818	Stock Index	4775.106	56.70%
000963	CSI Downstream	20041231	1000	20100416	Stock Index	6320.713	56.55%
H30018	800 Media	20041231	1000	20121221	Stock Index	7571.687	56.51%
000907	CSI 700	20041231	1000	20070115	Stock Index	7291.475	56.51%
H30081	300 Utilities Transp	20041231	1000	20130509	Stock Index	2562.404	56.38%
000096	SSE Downstream	20031231	1000	20110510	Stock Index	4850.48	56.27%
000812	Machinery Sub-indu	20041231	1000	20120411	Stock Index	7257.893	56.20%
000118	380 Value	20031231	1000	201111018	Stock Index	10643.78	55.87%
000104	380 Energy	20031231	1000	20110613	Stock Index	2608.531	55.79%
000987	All Share Materials	20041231	1000	20110802	Stock Index	4364.255	55.69%
H30531	Industrials and Man	20041231	1000	20141218	Stock Index	4825.318	55.69%
H50026	SSE Health Care Di	20051230	1000	20130702	Stock Index	9795.818	55.60%
H11055	CSI Shipbuilding Sti	20081231	1000	20090722	Stock Index	3998.991	55.42%
H30164	All Share Auto& Cor	20041231	1000	20130715	Stock Index	7717.759	55.38%
000933	CSI Health Care	20041231	1000	20090703	Stock Index	11317.48	55.29%

Index Code	Index Name	Base Date	Base Index	Launch Date	Index Type	Index Value	Performance in 2015H1
930607	CSI Automobiles	20041231	1000	20150331	Stock Index	7265.808	54.69%
H30199	All Share Electric Ut	20041231	1000	20130715	Stock Index	4477.365	54.68%
H11054	CSI Equips Stimulus	20081231	1000	20090722	Stock Index	3315.681	54.48%
000930	CSI Industrials	20041231	1000	20090703	Stock Index	5185.394	54.33%
930641	CSI Traditional Chin	20041231	1000	20150519	Stock Index	14183.45	54.17%
930642	CSI Nuclear Energy	20041231	1000	20150519	Stock Index	5020.298	54.14%
000962	CSI Midstream	20041231	1000	20100416	Stock Index	4552.308	54.13%
950073	SSE Internet	20120629	1000	20150529	Stock Index	2858.487	54.04%
000809	Agriculture Sub-indu	20041231	1000	20120411	Stock Index	7166.736	53.82%
000158	SSE EP	20111230	1000	20120925	Stock Index	2395.252	53.75%
000037	SSE Health Care	20031231	1000	20090109	Stock Index	7079.004	53.66%
000105	380 Materials	20031231	1000	20110613	Stock Index	5587.599	53.63%
H30137	CSI Urbanization	20120629	1000	20130826	Stock Index	2336.651	53.56%
H30032	800 Machinery	20041231	1000	20121221	Stock Index	7706.748	53.28%
000817	Industrial Straits	20110817	1000	20110927	Stock Index	1978.836	53.17%
000103	SSE Consume	20031231	1000	20110613	Stock Index	8062.721	52.97%
000110	380 Financials	20031231	1000	20110613	Stock Index	7561.164	52.89%
H50018	SSE Culture	20120629	1000	20130326	Stock Index	3013.391	52.83%
000095	SSE Midstream	20031231	1000	20110510	Stock Index	4352.216	52.68%
000841	800 Pharma. & Bio.	20041231	1000	20121221	Stock Index	11064.98	52.66%
000939	CSI POEs 200	20090630	1000	20090825	Stock Index	2197.299	52.61%
000990	All Share Cons Stap	20041231	1000	20110802	Stock Index	10157.1	52.60%
H50052	SSE SOEs Reform	20140331	1000	20141028	Stock Index	2109.378	52.45%
H11058	CSI Light Indu Stim	20081231	1000	20090722	Stock Index	3773.007	52.30%
L11509	300 Media	20041231	1000	20090616	Stock Index	3312.631	52.28%
L11628	300 Media	20041231	1000	20090616	Stock Index	3646.577	52.28%
H30214	All Share Energy Ec	20041231	1000	20130715	Stock Index	9800.219	52.21%
930614	CSI Environmental I	20111230	1000	20150407	Stock Index	2293.703	52.19%
000902	CSI Free Float	20051230	1000	20060227	Stock Index	6700.386	52.16%
H50044	SSE Health Industry	20131231	1000	20140606	Stock Index	1829.215	52.13%
930621	CSSW High-Speed	20081231	1000	20150423	Stock Index	3843.304	51.78%
000911	CSI 300 Cons Disc	20041231	1000	20070702	Stock Index	6651.985	51.73%
000034	SSE Industrials	20031231	1000	20090109	Stock Index	3698.973	51.64%
000074	SSE Cons Staples E	20031231	1000	20100818	Stock Index	7452.552	51.60%
000146	Select Manufacturin	20031231	1000	20120529	Stock Index	11510.26	51.39%
H30139	CSI Green Cities	20120629	1000	20130826	Stock Index	2243.412	51.34%
000985	CSI All Share	20041231	1000	20110802	Stock Index	6374.83	51.10%
H50022	SSE Materials Divid	20051230	1000	20130702	Stock Index	5504.361	51.10%
H30177	All Share Food & Be	20041231	1000	20130715	Stock Index	9416.365	51.02%
000046	SSE MID&SMALL C	20031231	1000	20090703	Stock Index	5813.538	50.86%
000976	Xinhua Golden-Bull	20041231	1000	20140218	Stock Index	8033.723	50.63%
H30403	CSI300DRL2I	20090630	3000	20140902	Stock Index	4226.89	50.43%
000910	CSI 300 Industrials	20041231	1000	20070702	Stock Index	4010.306	50.35%
H30200	All Share Transport	20041231	1000	20130715	Stock Index	3310.27	50.08%
950070	SSE Automobiles	20041231	1000	20150421	Stock Index	6450.089	50.00%
000995	All Share Utilities	20041231	1000	20110802	Stock Index	4183.017	49.86%
L11603	300 Chemicals	20041231	1000	20090616	Stock Index	3804.752	49.80%
H30367	CSI Grand Agricultu	20131231	1000	20140722	Stock Index	1623.11	49.72%
000113	380 Utilities	20031231	1000	20110613	Stock Index	3822.12	49.71%
H50030	SSE Utilities Divider	20051230	1000	20130702	Stock Index	6944.432	49.70%
H50043	SSE Old-Age Indust	20051230	1000	20140606	Stock Index	11966.18	49.61%
H50023	SSE Industrials Divi	20051230	1000	20130702	Stock Index	9380.7	49.47%
000035	SSE Cons Disc	20031231	1000	20090109	Stock Index	3833.097	49.45%
H50009	180 Telecommunicæ	20031231	1000	20120629	Stock Index	2789.154	49.33%
930653	CSI Food & Beverag	20041231	1000	20150605	Stock Index	10007.31	49.31%
H50037	SSE Urbanization	20120629	1000	20130826	Stock Index	2623.078	49.18%

Index Code	Index Name	Base Date	Base Index	Launch Date	Index Type	Index Value	Performance in 2015H1
000814	Health Care Sub-inc	20041231	1000	20120411	Stock Index	9792.768	48.99%
399974	CSI SOEs Reform	20140331	1000	20140807	Stock Index	2111.969	48.91%
H30012	800 Capital Goods	20041231	1000	20121221	Stock Index	7219.054	48.77%
H30165	All Share Real Estat	20041231	1000	20130715	Stock Index	8457.96	48.71%
H30092	CSI Industrials Divic	20051230	1000	20130702	Stock Index	9947.522	48.68%
000960	CSI Industry Top	20041231	1000	20100209	Stock Index	4990.521	48.43%
000922	CSI Dividend	20041231	1000	20080526	Stock Index	5118.203	48.41%
000969	CSI 300 non-Cyclic	20041231	1000	20100528	Stock Index	4994.433	48.01%
H30273	200 Dynamic	20041231	1000	20140117	Stock Index	5089.127	48.01%
950071	SSE Infrastructure	20041231	1000	20150421	Stock Index	14475	47.91%
000147	Select Consumption	20031231	1000	20120529	Stock Index	6644.932	47.74%
H30251	CSI 500 Materials	20041231	1000	20131106	Stock Index	5263.633	47.63%
000977	Mainland L-C Index	20100630	1000	20110121	Stock Index	1682.841	47.57%
H30250	CSI 500 Energy	20041231	1000	20131106	Stock Index	6586.112	47.42%
L11620	300 Trans Infrastruc	20041231	1000	20090616	Stock Index	2403.476	47.28%
000093	SSE 180 Sector Eq	20020628	3299.06	20110524	Stock Index	14086.66	47.26%
399998	CSI Coal	20081231	1000	20150213	Stock Index	2156.311	47.26%
000065	SSE Industry Top	20031231	1000	20100209	Stock Index	4131.227	47.18%
000114	Sustainable industry	20110630	1000	20110822	Stock Index	1586.658	47.08%
930620	CSSW One Belt anc	20081231	1000	20150423	Stock Index	2727.591	47.05%
000007	Utilities Index	19930430	1358.78	19930503	Stock Index	9041.108	46.81%
000041	SSE Utilities	20031231	1000	20090109	Stock Index	3737.535	46.63%
000996	CSI Leading Industr	20041231	1000	20110802	Stock Index	10095.26	46.56%
000979	CSI Commodity	20041231	1000	20110822	Stock Index	5397.123	46.45%
H30082	CSI300 L2XI	20090630	3000	20130403	Stock Index	3026.437	46.44%
H50010	180 Utilities	20031231	1000	20120629	Stock Index	2893.662	46.44%
H50003	180 Industrials	20031231	1000	20120629	Stock Index	3435.436	46.40%
000937	CSI Utilities	20041231	1000	20090703	Stock Index	3837.303	46.22%
H30030	800 Utilities	20041231	1000	20121221	Stock Index	3614.924	46.22%
000036	SSE Cons Staples	20031231	1000	20090109	Stock Index	7371.291	46.11%
000820	Coal Index	20041231	1000	20120509	Stock Index	3707.165	45.79%
000949	CN Agriculture	20041231	1000	20091028	Stock Index	5929.182	45.71%
000904	CSI 200	20041231	1000	20070115	Stock Index	5982.063	45.62%
H30142	CSI Urbanization C	20120629	1000	20130826	Stock Index	1734.344	45.38%
H50031	SSE Green Cities	20120629	1000	20130826	Stock Index	2243.164	45.33%
000069	SSE Consumer 80	20031231	1000	20100528	Stock Index	4591.055	45.25%
000932	CSI Cons Staples	20041231	1000	20090703	Stock Index	9308.432	45.22%
000064	SSE non-Cyclical	20031231	1000	20100203	Stock Index	3517.392	45.22%
000916	CSI 300 Telecom S	20041231	1000	20070702	Stock Index	3572.597	45.17%
000071	SSE Materials EW	20031231	1000	20100818	Stock Index	4038.388	44.99%
000984	CSI 300 Equal Weig	20041231	1000	20110802	Stock Index	5719.845	44.94%
H30525	300SER	20041231	1000	20150106	Stock Index	6610.728	44.85%
H30357	800R Growth	20041231	1000	20140609	Stock Index	5081.128	44.84%
000981	CSI 300 SEW	20041231	1000	20110613	Stock Index	6339.72	44.70%
H30074	CSI Services	20041231	1000	20130326	Stock Index	6175.979	44.63%
H11051	CSI Steel Stimulus	20081231	1000	20090722	Stock Index	1507.012	44.49%
399703	SZFI 200	20021231	1000	20100510	Stock Index	6548.4	44.32%
H50025	SSE Cons. Staples	20051230	1000	20130702	Stock Index	15741.16	44.24%
000049	SSE POEs 50	20090630	1000	20090825	Stock Index	2074.975	44.24%
H30261	300 ERC	20041231	1000	20131121	Stock Index	6006.49	44.19%
H30094	CSI Cons. Staples [20051230	1000	20130702	Stock Index	18605.63	44.11%
L11503	300 Capital goods	20041231	1000	20090616	Stock Index	6423.663	44.00%
930608	CSI Infrastructure	20041231	1000	20150331	Stock Index	13381.86	43.93%
H30205	All Share Beverages	20041231	1000	20130715	Stock Index	10906.74	43.84%
000815	Food & Beverage S	20041231	1000	20120411	Stock Index	10015.78	43.81%
399991	CSI OBOR	20121231	1000	20150216	Stock Index	2528.105	43.74%

Index Code	Index Name	Base Date	Base Index	Launch Date	Index Type	Index Value	Performance in 2015H1
000004	Industrial Index	19930430	1358.78	19930503	Stock Index	3475.819	43.69%
L11655	300 Electric Utilities	20041231	1000	20090616	Stock Index	3204.163	43.58%
000102	SSE Investment	20031231	1000	20110613	Stock Index	6430.008	43.45%
930619	CSI Gold Miners	20111231	1000	20150416	Stock Index	1450.142	43.26%
H50006	180 180 Health Care	20031231	1000	20120629	Stock Index	4691.399	43.21%
H11121	Fullgoal Long-Short	20051231	1000	20110726	Stock Index	22929.89	43.18%
H30274	200 Stability	20041231	1000	20140117	Stock Index	6927.037	43.09%
H30128	Optimized Low Beta	20041231	1000	20130703	Stock Index	6929.136	43.05%
L11525	300 Utilities	20041231	1000	20090616	Stock Index	3151.919	42.81%
000917	CSI 300 Utilities	20041231	1000	20070702	Stock Index	3139.314	42.81%
000942	CN Consumer	20041231	1000	20091028	Stock Index	7071.404	42.78%
000051	SSE 180 Equal Weight	20020628	3299.06	20110524	Stock Index	12174.44	42.42%
000855	CCTV500	20091231	1000	20141103	Stock Index	1493.34	42.18%
H30191	All Share Metals & M	20041231	1000	20130715	Stock Index	3476.647	42.04%
000126	Consumer 50	20041231	1000	20111209	Stock Index	7679.681	42.04%
H30532	Natural Resource S	20041231	1000	20141218	Stock Index	3398.077	42.01%
000807	Food & Beverage	20041231	1000	20120217	Stock Index	10233.59	41.97%
000943	CN Infrastructure	20041231	1000	20091028	Stock Index	3131.258	41.87%
000070	SSE Energy EW	20031231	1000	20100818	Stock Index	4282.83	41.84%
399987	CSI Alcoholic Drink	20081231	1000	20141210	Stock Index	2784.896	41.54%
H11052	CSI Auto Stimulus	20081231	1000	20090722	Stock Index	5234.29	41.49%
H30015	800 Auto & Comp.	20041231	1000	20121221	Stock Index	7079.953	41.41%
H30089	CSI Dividend Potenti	20051230	1000	20130702	Stock Index	5758.856	41.36%
399704	SZSE Upstream	20021231	1000	20111018	Stock Index	6360.414	41.14%
H30195	All Share Constructi	20041231	1000	20130715	Stock Index	8173.322	40.78%
H30021	800 Food & Beverag	20041231	1000	20121221	Stock Index	8882.112	40.68%
000148	leading cons. and se	20041231	1000	20120529	Stock Index	8501.194	40.31%
399702	SZFI 120	20021231	1000	20100510	Stock Index	6401.477	40.04%
000913	CSI 300 Health Care	20041231	1000	20070702	Stock Index	8444.183	39.97%
399995	Const-Engineering	20041231	1000	20150312	Stock Index	8276.749	39.95%
000829	CSI 300 LB	20041231	1000	20120806	Stock Index	5932.632	39.88%
H30167	All Share Building M	20041231	1000	20130715	Stock Index	8337.559	39.73%
000806	Consumption and S	20041231	1000	20120210	Stock Index	8049.075	39.59%
L11515	300 Pharma & Biote	20041231	1000	20090616	Stock Index	8373.913	39.54%
L11640	300 Pharmaceutical	20041231	1000	20090616	Stock Index	10191.74	39.53%
H50067	180 ERC	20041231	1000	20150316	Stock Index	5816.468	39.27%
930622	CSSW Liquor	20041231	1000	20150423	Stock Index	13608.8	39.21%
399997	CSI Liquor	20081231	1000	20150121	Stock Index	3470.417	39.21%
000066	SSE Commodity Eq	20031231	1000	20100430	Stock Index	2517.047	39.20%
000929	CSI Materials	20041231	1000	20090703	Stock Index	3511.097	39.13%
H30011	800 Materials	20041231	1000	20121221	Stock Index	3481.945	39.13%
H30198	All Share Oil, Gas &	20041231	1000	20130715	Stock Index	3346.221	38.83%
H11057	CSI Petrochemical &	20081231	1000	20090722	Stock Index	1480.18	38.75%
000816	Real Estate Sub-ind	20041231	1000	20120411	Stock Index	7711.715	38.71%
930598	CSI Rare Earth Indu	20111231	1000	20150302	Stock Index	2089.277	38.69%
930643	CSI Asset-light	20041231	1000	20150519	Stock Index	5809.683	38.65%
399965	800 Real Estate	20041231	1000	20121221	Stock Index	8090.144	38.54%
H30210	All Share Automobil	20041231	1000	20130715	Stock Index	8209.84	38.49%
H50033	SSE Urbanization C	20120629	1000	20130826	Stock Index	1773.153	38.42%
000950	300 Infrastructure	20041231	1000	20091028	Stock Index	3122.222	38.22%
000901	CSI Well-Off	20051230	1000	20100402	Stock Index	6804.697	38.11%
000044	SSE MID CAP	20031231	1000	20090703	Stock Index	4888.206	38.00%
000090	SSE Free Float	20091231	1000	20101202	Stock Index	1545.708	37.84%
000948	CN Real Estate	20041231	1000	20091028	Stock Index	7948.673	37.83%
399972	300 SZSE	20041231	1000	20120621	Stock Index	5351.88	37.83%
000953	CSI L SOEs	20090630	1000	20100209	Stock Index	1736.034	37.78%

Index Code	Index Name	Base Date	Base Index	Launch Date	Index Type	Index Value	Performance in 2015H1
000015	SSE Dividend	20041231	1000	20050104	Stock Index	3508.269	37.70%
L11621	300 Auto Componer	20041231	1000	20090616	Stock Index	5081.299	37.57%
H30125	Optimized Growth	20041231	1000	20130703	Stock Index	6273.292	37.57%
000955	CSI SOEs	20090630	1000	20100209	Stock Index	1684.939	37.54%
H30005	CSI West Region In	20041231	1000	20120927	Stock Index	8132.401	37.38%
H30597	New Materials	20081231	1000	20150213	Stock Index	3575.657	37.27%
000912	CSI 300 Cons Stapl	20041231	1000	20070702	Stock Index	8557.869	37.17%
000926	CSI Central SOEs	20081231	1000	20090330	Stock Index	2652.393	37.04%
H30124	AZ Active	20071228	1000	20130701	Stock Index	1280.905	37.03%
000906	CSI 800	20041231	1000	20070115	Stock Index	5249.519	36.73%
H30269	CSI Dividend Low V	20051230	1000	20131219	Stock Index	9546.12	36.70%
000971	CSI EW 90	20031231	1000	20101202	Stock Index	3728.63	36.61%
L11633	300 Beverages	20041231	1000	20090616	Stock Index	10349.74	36.33%
000092	SSE Resource 50	20031231	1000	20110510	Stock Index	3420.662	36.29%
000025	180 Infrastructure	20020628	1000	20081215	Stock Index	2777.95	36.22%
H30270	CSI Dividend Value	20051230	1000	20131219	Stock Index	9151.355	35.96%
000846	ESG 100	20110630	1000	20121016	Stock Index	1380.105	35.96%
H50005	180 Consumer Stap	20031231	1000	20120629	Stock Index	5990.343	35.93%
L11614	300 Trading Compa	20041231	1000	20090616	Stock Index	5457.891	35.91%
H50021	SSE Energy Divider	20051230	1000	20130702	Stock Index	7888.445	35.86%
H30364	300MV	20041231	1000	20140708	Stock Index	6725.015	35.86%
H50019	SSE Dividend Retur	20051230	1000	20130327	Stock Index	5340.932	35.47%
399701	SZFI 60	20021231	1000	20100510	Stock Index	6228.969	35.47%
H50004	180 Consumer Disc	20031231	1000	20120629	Stock Index	3302.409	35.18%
000843	300 Dynamic	20041231	1000	20130107	Stock Index	4862.198	35.15%
H30090	CSI Energy Dividen	20051230	1000	20130702	Stock Index	6301.596	35.06%
000136	SSE 180 LB	20020628	3299.06	20120806	Stock Index	11062.69	35.04%
H50016	SSE Northeast Regi	20031231	1000	20120927	Stock Index	5349.574	34.70%
000059	SSE L&M&S Cap re	20031231	1000	20100104	Stock Index	3755.981	34.53%
000033	SSE Materials	20031231	1000	20090109	Stock Index	2628.036	34.52%
H30143	CSI Urbanization inf	20120629	1000	20130826	Stock Index	2253.294	34.51%
000967	CSI RAFI 600	20041231	1000	20100602	Stock Index	5898.682	34.47%
000135	SSE 180 HB	20020628	3299.06	20120806	Stock Index	9302.422	34.42%
L11611	300 Electrical Equip	20041231	1000	20090616	Stock Index	3655.612	34.36%
H30006	CSI Northeast Regir	20041231	1000	20120927	Stock Index	6396.274	34.27%
000986	All Share Energy	20041231	1000	20110802	Stock Index	3140.375	34.00%
000145	Select Resources	20031231	1000	20120529	Stock Index	4780.341	33.99%
000819	Non-ferrous metal	20041231	1000	20120509	Stock Index	5922.389	33.90%
000810	Energy Sub-industry	20041231	1000	20120411	Stock Index	3329.617	33.62%
L11502	300 Materials	20041231	1000	20090616	Stock Index	2906.957	33.34%
000909	CSI 300 Materials	20041231	1000	20070702	Stock Index	2899.533	33.34%
000828	CSI 300 HB	20041231	1000	20120806	Stock Index	4170.061	33.32%
H50045	SSE180 L2XI	20090630	7000	20140619	Stock Index	6653.839	33.20%
H50015	SSE West Region Ir	20031231	1000	20120927	Stock Index	6978.379	33.10%
L11606	300 Metals & Mining	20041231	1000	20090616	Stock Index	2631.355	32.97%
H30130	Optimized Low Vola	20041231	1000	20130703	Stock Index	6215.968	32.72%
H30001	CSI Bohai Industry	20041231	1000	20120927	Stock Index	3316.848	32.55%
000801	CSI Resource 80	20041231	1000	20111108	Stock Index	3899.548	32.52%
000811	non-ferrous metal S	20041231	1000	20120411	Stock Index	6705.328	32.45%
000100	SSEF 500	20041231	1000	20110701	Stock Index	5778.209	32.45%
000094	SSE Upstream	20031231	1000	20110510	Stock Index	3223.093	32.40%
H50014	SSE Central Region	20031231	1000	20120927	Stock Index	4424.966	32.37%
L11512	300 Food & Beverag	20041231	1000	20090616	Stock Index	8524.954	32.29%
000001	SSE Index	19901219	100	19910715	Stock Index	4277.222	32.23%
000002	A Share Index	19901219	100	19920221	Stock Index	4479.904	32.17%
000824	CSI Soes Dividend	20090630	1000	20120720	Stock Index	1884.031	32.16%

Index Code	Index Name	Base Date	Base Index	Launch Date	Index Type	Index Value	Performance in 2015H1
000017	New SSE Index	20051230	1000	20060104	Stock Index	3612.306	32.16%
000159	SH Equities	20031231	1000	20141117	Stock Index	3794.127	31.99%
000123	180 Dynamic	20020628	3299.06	20130208	Stock Index	10822.43	31.83%
000047	SSE TOTAL MARKI	20031231	1000	20090703	Stock Index	4107.107	31.72%
000803	CSI300VW	20041231	1000	20120109	Stock Index	7372.224	31.70%
H30358	800R Value	20041231	1000	20140609	Stock Index	5598.246	31.46%
H50040	SSE Dividend Low \	20051230	1000	20140321	Stock Index	8715.758	31.38%
H30031	800 Nonferrous Met	20041231	1000	20121221	Stock Index	5565.461	31.33%
000068	SSE Resource	20031231	1000	20100528	Stock Index	2861.565	30.87%
H30355	800 Growth	20041231	1000	20140609	Stock Index	5222.196	30.86%
000920	CSI 300R Growth	20041231	1000	20080121	Stock Index	4254.261	30.79%
000129	SSE180VW	20020628	3299.06	20120109	Stock Index	14687.4	30.55%
000805	A Share Resource	20041231	1000	20120106	Stock Index	5787.543	30.23%
000060	SSE L&M&S Cap re	20031231	1000	20100104	Stock Index	4366.31	30.03%
H50042	SSE Dividend Value	20051230	1000	20140321	Stock Index	8019.521	30.01%
H11059	CSI Nonferrous Stin	20081231	1000	20090722	Stock Index	2543.403	29.81%
H50020	SSE Dividend Poter	20051230	1000	20130702	Stock Index	4954.998	29.74%
000821	CSI 300 Dividend	20041231	1000	20120720	Stock Index	5912.104	29.68%
000152	SSE Central Soes C	20081231	1000	20120720	Stock Index	2643.471	29.64%
H30096	CSI Financials Divid	20051230	1000	20130702	Stock Index	8178.323	29.58%
H30004	CSI Central Region	20041231	1000	20120927	Stock Index	4293.898	29.55%
000032	SSE Energy	20031231	1000	20090109	Stock Index	2475.911	29.44%
L11642	300 Diversified Fina	20041231	1000	20090616	Stock Index	13827.78	29.40%
H30010	800 Energy	20041231	1000	20121221	Stock Index	3739.006	29.38%
000928	CSI Energy	20041231	1000	20090703	Stock Index	3180.272	29.38%
000050	SSE 50 EWI	20031231	1000	20110104	Stock Index	3036.234	29.13%
L11634	300 Food	20041231	1000	20090616	Stock Index	6085.219	29.01%
H30126	Optimized Value	20041231	1000	20130703	Stock Index	6639.932	28.67%
H30362	CSI RAFI 300	20041231	1000	20140722	Stock Index	5778.59	28.47%
000098	SSEF 200	20041231	1000	20110701	Stock Index	5006.072	28.39%
000965	CSI RAFI 200	20041231	1000	20100602	Stock Index	4958.317	28.32%
H50034	SSE Urbanization in	20120629	1000	20130826	Stock Index	2349.652	28.17%
H30356	800 Value	20041231	1000	20140609	Stock Index	5878.015	28.03%
000970	ESG 40	20100630	1000	20100917	Stock Index	1715.4	27.89%
H50011	SSE Bohai Industry	20031231	1000	20120927	Stock Index	3066.707	27.70%
L11610	300 Construction	20041231	1000	20090616	Stock Index	6185.074	27.56%
000927	CSI Central SOEs 1	20081231	1000	20090330	Stock Index	2275.255	27.56%
000151	SSE Soes Dividend	20090630	1000	20120720	Stock Index	1531.301	27.43%
L11506	300 Auto & Compor	20041231	1000	20090616	Stock Index	6256.202	27.02%
000961	CSI Upstream	20041231	1000	20100416	Stock Index	3550.796	26.84%
H30002	CSI Yangtze Industr	20041231	1000	20120927	Stock Index	5131.415	26.68%
H30073	CSI Dividend Returr	20041231	1000	20130327	Stock Index	5302.67	26.61%
000300	CSI 300	20041231	1000	20050408	Stock Index	4472.998	26.58%
H30034	300 Nonferrous Met	20041231	1000	20121221	Stock Index	4504.819	26.54%
000825	CSI Central Soes Di	20081231	1000	20120720	Stock Index	3623.706	26.52%
000940	Wealth Large	20041231	1000	20090925	Stock Index	5243.362	26.28%
H30129	Optimized High Vol	20041231	1000	20130703	Stock Index	4216.713	25.44%
000956	CSI SOEs 200	20090630	1000	20100209	Stock Index	1364.675	25.36%
000058	SSE Large&Mid&Sn	20031231	1000	20100104	Stock Index	4319.511	25.29%
H50002	180 Materials	20031231	1000	20120629	Stock Index	2208.452	25.26%
000062	SSE SHANGHAI en	20051231	1000	20100104	Stock Index	3047.602	24.86%
000908	CSI 300 Energy	20041231	1000	20070702	Stock Index	2759.579	24.73%
L11501	300 Energy	20041231	1000	20090616	Stock Index	2734.618	24.73%
000019	Governance Index	20070629	1000	20080102	Stock Index	1317.943	24.72%
000944	CN Resource	20041231	1000	20091028	Stock Index	3573.16	24.64%
000921	CSI 300R Value	20041231	1000	20080121	Stock Index	4413.113	24.32%

Index Code	Index Name	Base Date	Base Index	Launch Date	Index Type	Index Value	Performance in 2015H1
000918	CSI 300 Growth	20041231	1000	20080121	Stock Index	4448.04	24.10%
000919	CSI 300 Value	20041231	1000	20080121	Stock Index	4747.715	24.06%
000844	300 Stability	20041231	1000	20130107	Stock Index	4092.002	23.98%
H30400	800 Momentum	20041231	1000	20141113	Stock Index	4146.178	23.96%
000053	SSE180FI	20020628	3299.06	20120109	Stock Index	12070.48	23.89%
000006	Real Estate Index	19930430	1358.78	19930503	Stock Index	7719.718	23.82%
H50012	SSE Yangtze Indust	20031231	1000	20120927	Stock Index	3982.397	23.50%
L11658	300 Water Utilities	20041231	1000	20090616	Stock Index	2183.069	22.85%
000972	300 SSE	20041231	1000	20101202	Stock Index	4103.58	22.46%
000954	CSI L SOEs 100	20090630	1000	20100209	Stock Index	1351.221	22.44%
000057	SSE Large&Mid&Sn	20031231	1000	20100104	Stock Index	3921.781	22.39%
000030	180R Growth	20020628	1000	20090109	Stock Index	2451.04	22.14%
399983	300 Real Estate EW	20041231	1000	20131122	Stock Index	7867.734	22.03%
H30272	100 Stability	20041231	1000	20140117	Stock Index	3684.918	21.69%
H30218	All Share Water Utili	20041231	1000	20130715	Stock Index	3896.415	21.48%
H30003	CSI Pan Pearl River	20041231	1000	20120927	Stock Index	7000.233	21.43%
000925	CSI RAFI 50	20041231	1000	20090226	Stock Index	4015.789	21.14%
000149	SSE 180 Dividend	20041231	1000	20120720	Stock Index	4159.542	21.01%
000010	SSE 180	20020628	3299.06	20020701	Stock Index	9723.852	20.88%
H30127	Optimized High Bet	20041231	1000	20130703	Stock Index	3722.321	20.65%
L11602	300 Oil & Gas & Co.	20041231	1000	20090616	Stock Index	2408.83	20.53%
000031	180R Value	20020628	1000	20090109	Stock Index	3464.631	20.04%
000026	180 Natural Resour	20020628	1000	20081215	Stock Index	3386.721	19.59%
H00999	Everbright Sunshine	20041231	1000	20080801	Stock Index	5291.597	19.47%
000042	SSE Central SOEs	20081231	1000	20090330	Stock Index	2012.668	19.44%
H50027	SSE Financials Divi	20051230	1000	20130702	Stock Index	6590.304	19.24%
H50001	180 Energy	20031231	1000	20120629	Stock Index	2315.245	19.11%
000125	180 Stability	20020628	3299.06	20130208	Stock Index	9496.211	19.04%
000029	180 Value	20020628	1000	20090109	Stock Index	4205.632	18.35%
930618	CSI Insurance	20121231	1000	20150416	Stock Index	1987.2	18.24%
H30366	CSI HDY	20041231	1000	20140721	Stock Index	4740.243	17.49%
000903	CSI 100	20051230	1000	20060529	Stock Index	4036.631	17.32%
H50013	SSE Pan Pearl Rive	20031231	1000	20120927	Stock Index	5297.473	17.30%
000056	SSE State-owned 1	20090630	1000	20100104	Stock Index	1249.171	17.12%
000048	Responsibility Index	20090630	1000	20090805	Stock Index	1484.895	17.04%
000959	Galaxy 99	20041231	1000	20100209	Stock Index	6425.536	16.85%
000980	CSI Mega-Cap	20041231	1000	20110510	Stock Index	3449.692	16.63%
000155	Market Value Top 1	20031231	1000	20120720	Stock Index	3052.329	16.56%
000043	SSE Mega-cap	20031231	1000	20090423	Stock Index	2508.565	16.53%
000021	180 Governance	20070629	1000	20080910	Stock Index	1136.997	16.50%
930632	CSI Rare Metals	20111231	1000	20150512	Stock Index	1393.676	16.44%
CESA80	CES A80	20041231	2000	20130318	Stock Index	7423.09	16.20%
000028	180 Growth	20020628	1000	20090109	Stock Index	3308.041	16.06%
000008	Conglomerates Inde	19930430	1358.78	19930503	Stock Index	3536.937	15.15%
H30271	100 Dynamic	20041231	1000	20140117	Stock Index	4070.065	14.63%
000052	SSE50FI	20031231	1000	20120109	Stock Index	3008.339	14.12%
000055	SSE Local State-ow	20090630	1000	20100104	Stock Index	1260.227	13.38%
950076	SSE50 L2XI	20090630	2500	20150616	Stock Index	1790.008	12.00%
000952	300 Real Estate	20041231	1000	20091028	Stock Index	7581.459	11.95%
H30260	300 Momentum	20041231	1000	20131121	Stock Index	4299.104	11.21%
000016	SSE 50	20031231	1000	20040102	Stock Index	2870.025	11.17%
000968	CSI 300 Cyclical	20041231	1000	20100528	Stock Index	4310.275	9.99%
000054	SSE Overseas-listin	20061229	1000	20100104	Stock Index	1424.275	9.97%
000992	All Share Financials	20041231	1000	20110802	Stock Index	6737.853	9.34%
000947	CN Banks	20041231	1000	20091028	Stock Index	6313.218	8.33%
H30022	800 Banks	20041231	1000	20121221	Stock Index	6457.321	8.33%

Index Code	Index Name	Base Date	Base Index	Launch Date	Index Type	Index Value	Performance in 2015H1
399986	CSI Banks	20041231	1000	20130715	Stock Index	6502.149	8.33%
000134	SSE Banks	20071231	1000	20120529	Stock Index	880.7561	8.07%
L11641	300 Commercial Ba	20041231	1000	20090616	Stock Index	6101.103	8.01%
000951	300 Banks	20041231	1000	20091028	Stock Index	6101.102	8.01%
000934	CSI Financials	20041231	1000	20090703	Stock Index	6791.181	7.76%
H50057	SSE 180 Momentum	20041231	1000	20141113	Stock Index	3306.448	7.74%
H30595	Insurance Theme	20111231	1000	20150213	Stock Index	1936.237	7.38%
000076	SSE Financials EW	20031231	1000	20100818	Stock Index	5667.696	6.81%
H30186	All Share Insurance	20070629	1000	20130715	Stock Index	1032.199	6.09%
H30024	800 Insurance	20071231	1000	20121221	Stock Index	707.0664	5.93%
L11518	300 Insurance	20071231	1000	20090616	Stock Index	707.0693	5.93%
L11644	300 Insurance	20071231	1000	20090616	Stock Index	707.0693	5.93%
H50007	180 Financials	20031231	1000	20120629	Stock Index	5618.678	5.19%
000063	SSE Cyclical	20031231	1000	20100203	Stock Index	3522.698	5.03%
L11604	300 Construction M:	20041231	1000	20090616	Stock Index	6211.283	3.16%
000914	CSI 300 Financials	20041231	1000	20070702	Stock Index	6768.532	3.08%
000818	Financials Sub-indu	20041231	1000	20120411	Stock Index	6902.943	2.51%
000038	SSE Financials	20031231	1000	20090109	Stock Index	5260.453	2.49%
H30086	800 Financial	20041231	1000	20130509	Stock Index	6886.338	2.45%
000946	CN Financials	20041231	1000	20091028	Stock Index	7207.934	2.33%
000018	180 Financial	20020628	1000	20071210	Stock Index	5602.414	2.32%
H30035	300 Financials (ex E	20041231	1000	20121221	Stock Index	12066.1	-3.57%
399966	800 Fin(ex Banks)	20041231	1000	20121221	Stock Index	8175.93	-3.69%
H30588	Securities and Insur	20091231	1000	20150202	Stock Index	1332.758	-4.71%
399707	CSSW Securities	19991231	1000	20150416	Stock Index	10727.55	-5.44%
H30181	All Share Finance	20041231	1000	20130715	Stock Index	9765.636	-5.53%
H30023	800 Diversified Fina	20041231	1000	20121221	Stock Index	10375.3	-5.76%
H30211	All Share Capital M:	20070629	1000	20130715	Stock Index	1324.609	-7.77%
399975	All Share Brokerage	20070629	1000	20130715	Stock Index	1324.608	-7.77%
L11517	300 Diversified Fina	20041231	1000	20090616	Stock Index	13791.32	-8.00%
L11643	300 Capital Markets	20051231	1000	20090616	Stock Index	857.5651	-8.82%
000160	SSE OBOR	20121231	1000	20150624	Stock Index	2480.343	-13.82%
950077	SSE50 INI	20090630	2500	20150616	Stock Index	1664.449	-15.11%
H50046	SSE180 INI	20090630	7000	20140619	Stock Index	4179.747	-21.42%
H30083	CSI300 INI	20090630	3000	20130403	Stock Index	1753.001	-24.78%
H30404	CSI300DRINI	20090630	3000	20140902	Stock Index	1506.383	-25.67%
950078	SSE50 IN2XI	20090630	2500	20150616	Stock Index	546.276	-34.55%
930656	CSI500 INI	20090630	3500	20150616	Stock Index	1044.719	-43.27%
H50047	SSE180 IN2XI	20090630	7000	20140619	Stock Index	1261.324	-43.52%
H30084	CSI300 IN2XI	20090630	3000	20130403	Stock Index	520.9379	-48.13%
930657	CSI500 IN2XI	20090630	3500	20150616	Stock Index	148.5137	-70.59%