

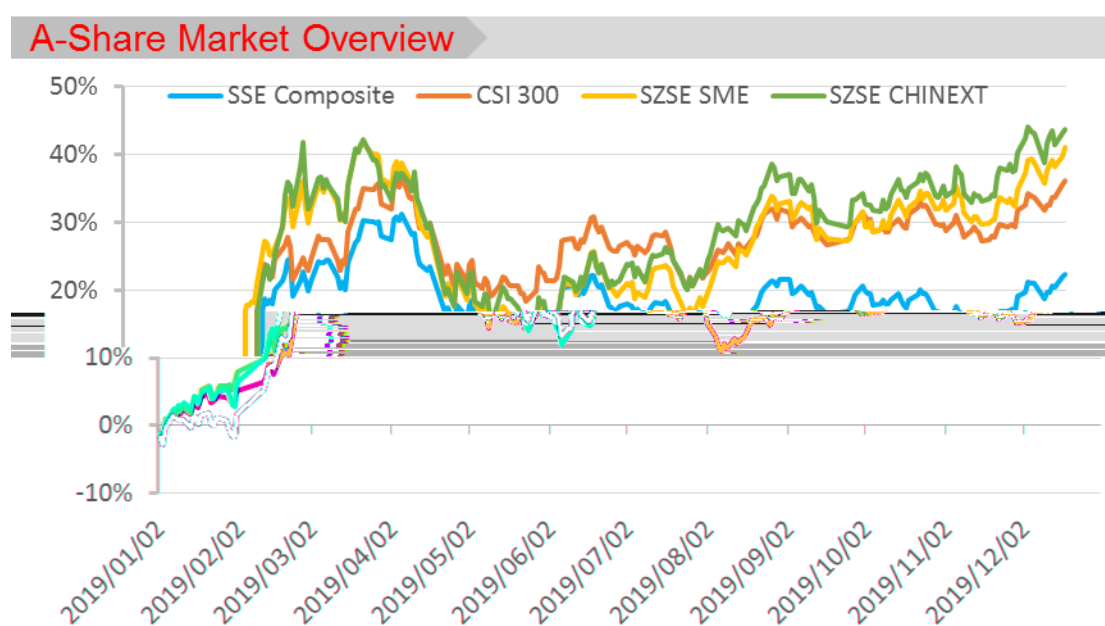
2019 Annual CSI&SSE A-Share Index Review

A-Share Market Review

In 2019, opportunities and challenges coexist in the A-share market. Internal and external uncertainties still exist, while the economy still faces downward pressure. The official launch of the STAR Market, the GEM reform and the accelerated registration of the pilot system, and the successful listing of the CSI 300 ETF options and the CSI 300 stock index options all indicate that A-share institutional reforms and product innovation have achieved significant results. What's more, the addition of A-shares to FTSE, the launch of the Shanghai-London Stock Connect and the China-Japan ETF Connect, the implementation of the third step of the MSCI A-Share Weight Enhancement Plan, and the lifting of the ban on QFII and RQFII marked the further development of China's capital market.

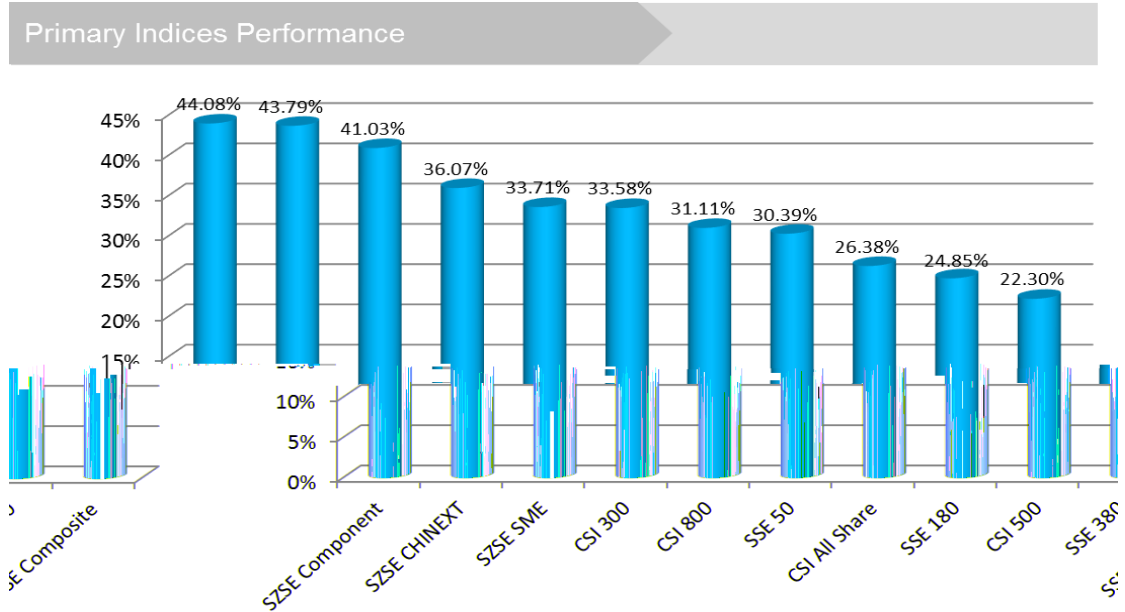
The activity level of the A-share market is significantly higher than last year, with both volume and price rising. The average daily transaction turnover and average daily transaction volume of the market are approximately 554.3 billion yuan and 53.6 billion shares respectively, an increase of 36.56% and 44.47% over last year. Overall, the annual return of SSE Composite, CSI 300, SZSE SME and SZSE CHINEXT are 22.30%, 36.07%, 41.03% and 43.79% respectively.

In the strategy indices, the dividend indices have performed outstandingly. The CSI Dividend Return and CSI Dividend Potential Index increased by 51.80% and 41.60% respectively. Among the thematic indices, semiconductor, liquor and technology performed well. CSI Semiconductor Index and CSI Liquor Index rose by 92.81% and 91.99% respectively, the largest gains.



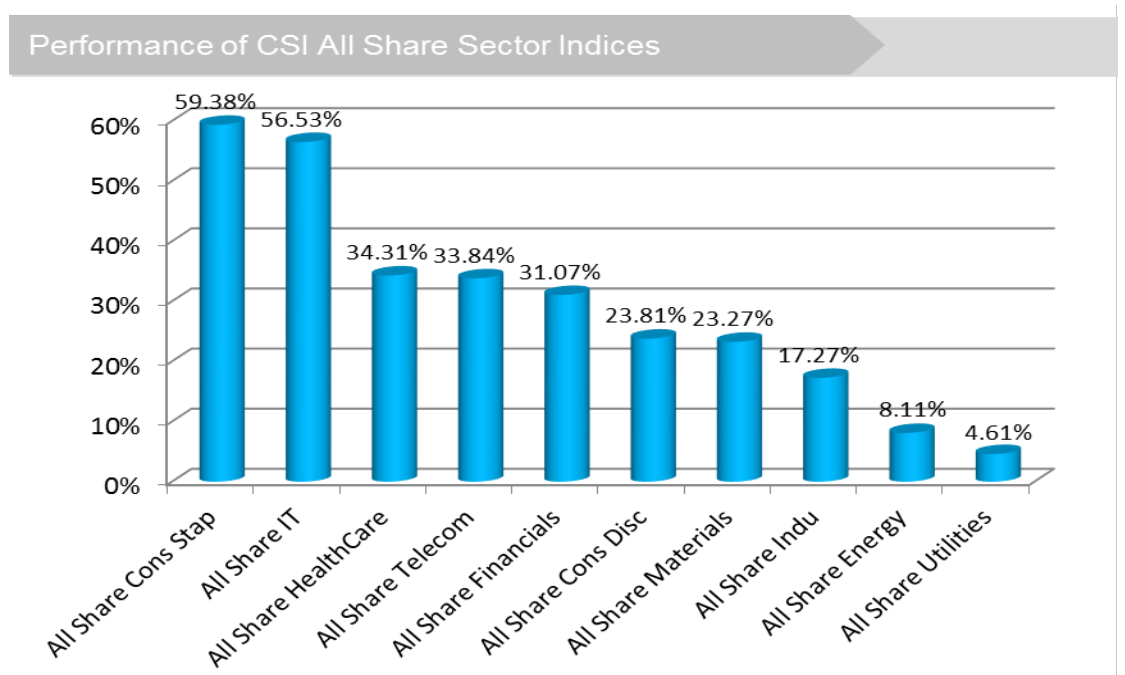
Performance of Primary Indices

In 2019, all primary indices were on a rise. The SZSE Component Index was the best performer, with an increase of 44.08%, while the SSE Composite Index was the smallest gainer at 22.30%.



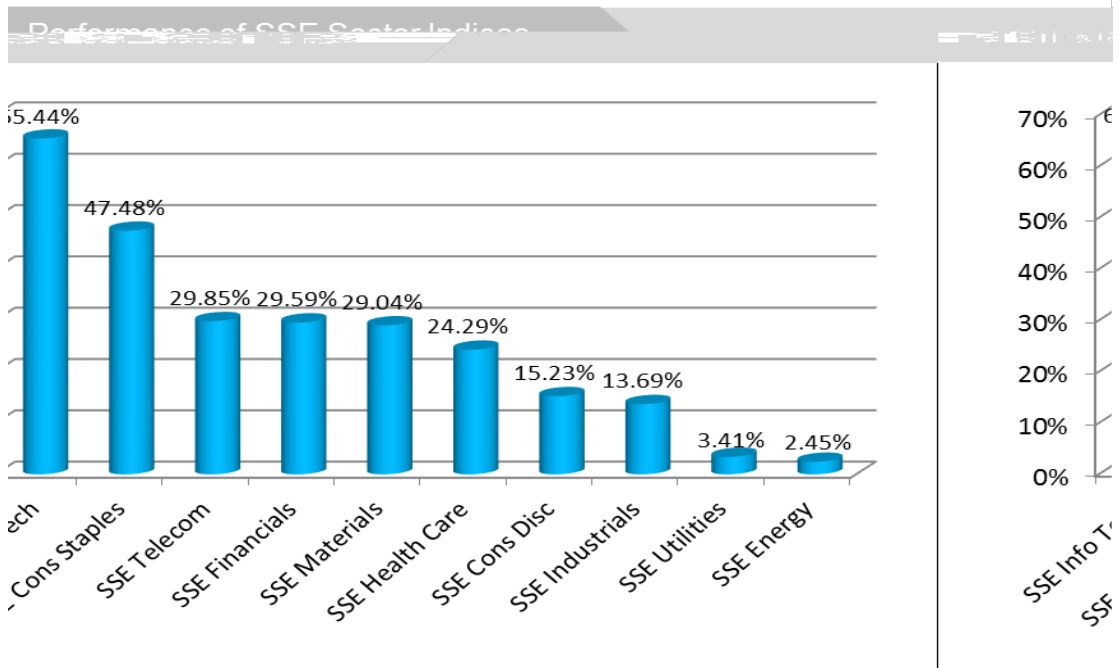
Performance of CSI Sector Indices

This year, all CSI sector indices showed an upward trend, among which the All Share Cons Stamp Index and All Share IT Index rose significantly by 59.38%, 56.53% respectively, and the All Share utilities rose slightly by 4.61%, ranking last.



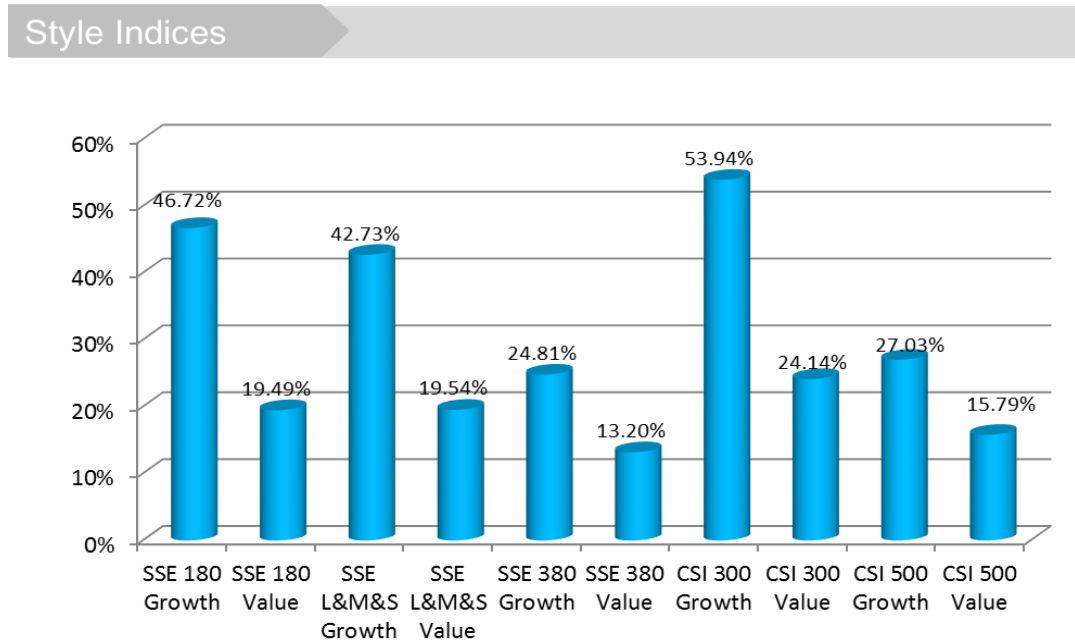
Performance of SSE Sector Indices

Among SSE Sector index series, SSE Info Tech Index had a largest increase of 65.44%, followed by the SSE Cons Staples Index up 47.48%, while the Energy Index only rose 2.45%.



Performance of Style Indices

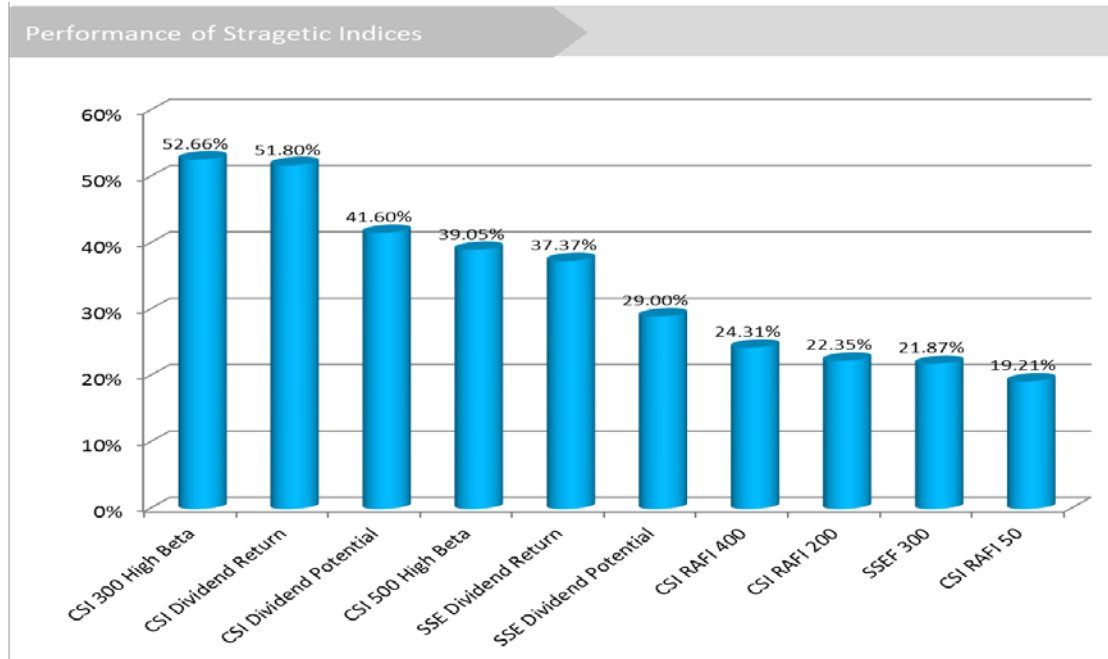
In 2019, all 5 growth style indices performed better than value style indices, out of which the CSI 300 Growth Style Index performed best, up 53.94%.



Performance of Strategic Indices

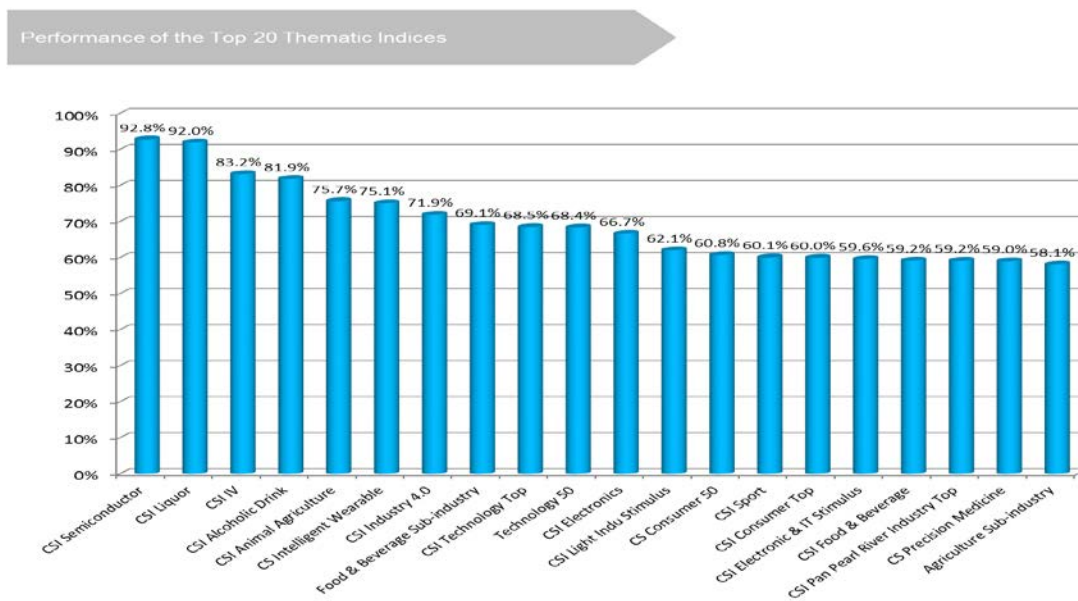
Among strategic indices, the high beta and dividend indices performed better than RAFI indices.


Among them, the CSI 300 High Beta Index rose 52.66%, which was the best performer.



Performance of Thematic indices

In 2019, semiconductor, liquor and technology had the most excellent performance. Notably, CSI Semiconductor Index and CSI Liquor Index had the relative highest growth rates of 92.81% and 91.99% respectively.





All information contained herein is provided for reference only, and is not intended to provide professional advice and shall not be relied upon in that regard. China Securities Index Co., Ltd. (“CSI”) makes no warranty or representation as to the accuracy, completeness or reliability of any of the information contained herein and accepts no liability (whether in tort or contract or otherwise) whatsoever to any person for any damages or loss of any nature arising from or as a result of reliance on any of the contents of this document, or any errors or omission in its contents.

The copyright of this document belongs to CSI. “CSI” “CSI 300” “CSI” “CSI” “CSI” “CSI 300” “CSI 300” and other trademarks in relation to CSI and its products and services are exclusively owned by the Shanghai Stock Exchange and/or CSI. Without written authorization from the Shanghai Stock Exchange and/or CSI, no institution or individual may use any such trademarks in any form.

I							A
H30028	800 Semi. & Equipment	20041231	1000	20121221	4852.63	134.15%	
H30184	All Share Semiconductors	20041231	1000	20130715	4486.02	106.33%	
930678	CSI500 Semiconductors	20041231	1000	20150707	9676.63	105.08%	
L11633	300 Beverages	20041231	1000	20090616	38382.27	103.22%	
930622	CSSW Liquor	20041231	1000	20150423	33831.34	92.88%	
931081	CSI Semiconductor	20091231	1000	20190320	2806.26	92.81%	
399997	CSI Liquor	20081231	1000	20150121	8406.62	91.99%	
930679	CSI500 Hardware	20041231	1000	20150707	8951.66	90.89%	
000111	380 Information	20031231	1000	20110613	6796.80	85.12%	
930690	CSI500 Electronic Device	20041231	1000	20150707	11898.55	84.76%	
930721	CSI IV	20120629	1000	20150805	4077.70	83.21%	
L11512	300 Food & Beverage	20041231	1000	20090616	22367.49	82.31%	
399987	CSI Alcoholic Drink	20081231	1000	20141210	4672.58	81.89%	
000912	CSI 300 Cons Staples	20041231	1000	20070702	20882.30	79.32%	
L11604	300 Construction Materials	20041231	1000	20090616	10876.43	78.82%	
H30205	All Share Beverages	20041231	1000	20130715	20361.59	77.75%	
930707	CSI Animal Agriculture	20111231	1000	20150713	3037.14	75.70%	
930711	CS Intelligent Wearable	20120629	1000	20150731	2966.03	75.11%	
399811	CSSW Electronics	20041231	1000	20150803	3036.27	74.12%	
399803	CSI Industry 4.0	20120629	1000	20150213	2754.78	71.93%	
000807	Food & Beverage	20041231	1000	20120217	19084.51	69.80%	
000815	Food & Beverage Sub-industry	20041231	1000	20120411	18883.34	69.10%	
H30257	CSI 500 IT	20041231	1000	20131106	7615.72	69.04%	
H50005	180 Consumer Staples	20031231	1000	20120629	14612.37	69.00%	
931087	CSI Technology Top	20120629	1000	20190320	3427.08	68.49%	
H30021	800 Food & Beverage	20041231	1000	20121221	16244.99	68.40%	
931380	Technology 50	20140630	1000	20191125	2435.80	68.39%	
000077	SSE Info Tech EW	20031231	1000	20100818	4809.94	67.29%	
H50008	180 Information Technology	20031231	1000	20120629	3189.19	67.05%	
930652	CSI Electronics	20041231	1000	20150605	6100.76	66.65%	
L11623	300 Household Durables	20041231	1000	20090616	16523.18	65.74%	
H30027	800 Hardware and Equipment	20041231	1000	20121221	5308.70	65.63%	
000039	SSE Info technology	20031231	1000	20090109	3878.49	65.44%	
000932	CSI Cons Staples	20041231	1000	20090703	16123.04	64.72%	
H30190	All Share Electronic Device	20041231	1000	20130715	6586.26	63.94%	
H30373	CSI Baifa 100	20081231	1000	20140730	15436.47	63.88%	
H30202	All Share Software	20041231	1000	20130715	14265.56	63.37%	
000935	CSI IT	20041231	1000	20090703	4648.00	63.33%	
H30177	All Share Food & Beverage	20041231	1000	20130715	13571.86	62.84%	
L11507	300 Cons Durables & Apparel	20041231	1000	20090616	12506.80	62.37%	
H11058	CSI Light Indu Stimulus	20081231	1000	20090722	5532.88	62.08%	
930696	CSI500 Beverages	20041231	1000	20150707	14445.88	61.88%	
930910	AllShareAgri,Husba&Fishery	20041231	1000	20161212	10069.55	61.63%	
931139	CS Consumer 50	20041231	1000	20190320	16382.99	60.76%	
L11520	300 IT Software	20041231	1000	20090616	1764.71	60.22%	
399804	CSI Sport	20120629	1000	20150209	1857.80	60.08%	
931068	CSI Consumer Top	20041231	1000	20181121	14053.88	59.98%	
H11056	CSI Electronic & IT Stimulus	20081231	1000	20090722	4019.06	59.61%	
000915	CSI 300 Info Technology	20041231	1000	20070702	2305.72	59.54%	
H30183	All Share Hardware	20041231	1000	20130715	5460.97	59.51%	
000990	All Share Cons Stap	20041231	1000	20110802	14117.33	59.38%	
930653	CSI Food & Beverage	20041231	1000	20150605	15176.47	59.23%	
H30003	CSI Pan Pearl River Industry Top	20041231	1000	20120927	11186.99	59.19%	
930719	CS Precision Medicine	20120629	1000	20150805	3121.28	59.04%	
000809	Agriculture Sub-industry	20041231	1000	20120411	6276.77	58.13%	

I						A
931186	CSI Technology	20121231	1000	20190530	4205.09	57.74%
399970	Mobile Internet	20120629	1000	20140505	2621.73	57.50%
000131	SSE High and New Tech	20110630	1000	20120210	1894.74	57.16%
931063	Founder-Run Index	20161231	1000	20180122	1350.93	56.85%
000993	All Share IT	20041231	1000	20110802	5861.10	56.53%
000942	CN Consumer	20041231	1000	20091028	9746.87	55.75%
930714	CS Intelligent Appliances	20120629	1000	20150731	2952.35	55.75%
399993	CSWD Biotechnology	20091231	1000	20150508	3027.76	55.46%
931000	Greater Bay Area	20161230	1000	20170719	1535.72	55.39%
931371	Consumer Brand 100	20081231	1000	20191125	5939.14	55.37%
000998	CSI TMT Index	20110630	1000	20111108	2023.24	55.21%
399996	CSI Smart Home	20120629	1000	20140917	2775.64	55.10%
H30097	CSI IT Dividend	20051230	1000	20130702	24398.17	55.03%
931353	CSI Technology Driven	20081231	1000	20191115	2870.11	55.00%
L11521	300 IT Hardware	20041231	1000	20090616	3129.43	54.53%
930713	CS AI	20120629	1000	20150731	2930.75	54.47%
H30368	CSI High & New Tech	20140630	1000	20140717	1896.05	54.03%
000918	CSI 300 Growth	20041231	1000	20080121	5074.01	53.94%
H30080	300 Consumption Service	20041231	1000	20130509	9430.53	53.89%
931003	Agriculture Reform	20120629	1000	20170721	1837.74	53.82%
H30094	CSI Cons. Staples Dividend	20051230	1000	20130702	31092.34	53.81%
930643	CSI Asset-light	20041231	1000	20150519	6457.87	53.58%
930743	CSI Biotechnology	20111231	1000	20150826	3701.29	53.23%
931356	POEs Innovation	20091231	1000	20191115	2254.50	53.00%
930715	CSI Suntime 88	20120131	1000	20150805	5213.53	52.92%
H30007	CSI Strategic Information	20051230	1000	20121220	5166.16	52.76%
H30026	800 Software & Services	20041231	1000	20121221	4813.44	52.69%
000828	CSI 300 HB	20041231	1000	20120806	2912.31	52.66%
399972	300 SZSE	20041231	1000	20120621	4993.78	52.13%
931260	Connect A Invest	20170331	1000	20191118	1666.20	52.11%
H30073	CSI Dividend Return	20041231	1000	20130327	7267.23	51.80%
H30005	CSI West Region Industry Top	20041231	1000	20120927	7743.02	51.77%
950072	SSE Information Security	20101231	1000	20150713	2670.68	51.64%
H30221	All Share Multi-Utilities	20041231	1000	20130715	4957.61	51.62%
H30142	CSI Urbanization Consumption	20120629	1000	20130826	2156.28	51.01%
930738	Sichuan SOEs Reform	20111231	1000	20180710	1657.10	50.93%
H30079	300 Information Service	20041231	1000	20130509	2186.05	50.90%
H30207	All Share Computers	20041231	1000	20130715	5325.38	50.89%
H30318	TMT 150	20110630	1000	20140415	1839.86	50.81%
931009	All Share Building Materials	20041231	1000	20130715	8407.81	50.72%
399994	CSI Info-security	20101231	1000	20150312	1737.65	50.67%
950089	SSE Electronics	20041231	1000	20151127	5157.25	50.60%
000920	CSI 300R Growth	20041231	1000	20080121	3678.96	50.42%
H50039	SSE TMT Index	20110630	1000	20131225	1939.88	50.27%
H50028	SSE IT Dividend	20051230	1000	20130702	12614.63	50.05%
931267	CSI POEs Leading	20121231	1000	20191115	2975.02	49.87%
930651	CSI Computer	20041231	1000	20150605	7703.07	49.45%
931187	Technology 100	20140613	1000	20190530	2424.38	49.22%
930601	CSI Software & Services	20041231	1000	20150310	7759.24	49.08%
950088	SSE Asset-light	20041231	1000	20151127	5804.59	48.97%
H30443	1000 Consumer Staples	20041231	1000	20141017	7657.24	48.90%
931165	Emerging Technology 100	20081231	1000	20190425	6263.51	48.88%
931354	CSI Consumer Driven	20081231	1000	20191115	3992.80	48.81%
L11518	300 Insurance	20071231	1000	20090616	1245.55	48.74%
L11644	300 Insurance	20071231	1000	20090616	1245.55	48.74%
950105	SSE Securities	20121231	1000	20161018	1498.87	48.71%
399989	CSI Medical Service	20041231	1000	20141031	9104.95	48.67%

I						A
931057	Equity Incentive	20111231	1000	20180104	3767.10	48.49%
H30024	800 Insurance	20071231	1000	20121221	1228.19	48.31%
H30186	All Share Insurance	20070629	1000	20130715	1770.07	48.31%
H00999	Everbright Sunshine Index	20041231	1000	20080801	7492.78	48.20%
930986	CSI Fintech	20140630	1000	20170622	1963.59	48.18%
930648	CSI Intelligent Consumer	20120629	1000	20150605	2627.87	48.10%
H30355	800 Growth	20041231	1000	20140609	5088.89	47.90%
931159	Innovation 100	20140630	1000	20190516	2159.62	47.87%
H30212	All Share Biotechnology	20041231	1000	20130715	12801.35	47.82%
931005	CSI Maternal and Child Consumption	20091231	1000	20170721	2127.42	47.75%
931152	CS Brand Name Drug	20141231	1000	20190422	2095.84	47.56%
000036	SSE Cons Staples	20031231	1000	20090109	10838.50	47.48%
930706	CSI Cement	20041231	1000	20150713	6642.36	47.35%
000954	CSI L SOEs 100	20090630	1000	20100209	1398.75	47.20%
930745	CSWD Big Data	20121231	1000	20150826	3654.36	47.04%
931067	CSSW Quality	20050630	1000	20180214	9057.41	47.00%
H30178	All Share Health Care	20041231	1000	20130715	16407.94	46.74%
000028	180 Growth	20020628	1000	20090109	3902.68	46.72%
H50013	SSE Pan Pearl River Industry Top	20031231	1000	20120927	7359.07	46.71%
H30182	All Share Software & Services	20041231	1000	20130715	8215.64	46.60%
931383	CSI Medical Biology 50	20141231	1000	20191226	1821.54	46.43%
931071	Artificial Intelligence	20141231	1000	20181121	1419.53	46.19%
000171	Emerging Component Index	20101231	1000	20170125	1288.87	46.17%
H30215	All Share Leisure Products	20041231	1000	20130715	3141.87	46.13%
H30035	300 Financials (ex Banks)	20041231	1000	20121221	11120.45	45.97%
930821	CSI VR	20120629	1000	20160511	2493.18	45.93%
H50017	SSE Strategic Information	20051230	1000	20121220	4372.41	45.91%
931167	Advanced Manufacturing 100	20081231	1000	20190425	5612.68	45.74%
399976	New Energy Vehicles	20111231	1000	20141128	2025.54	45.51%
H30273	200 Dynamic	20041231	1000	20140117	2795.71	45.48%
399707	CSSW Securities	19991231	1000	20150416	6480.14	45.40%
930680	CSI500 Software & Services	20041231	1000	20150707	6067.77	45.38%
H30271	100 Dynamic	20041231	1000	20140117	3244.04	45.21%
930759	CSI Snowball 100	20121231	1000	20150915	3100.66	45.18%
H30535	Internet	20120629	1000	20150112	2913.85	45.01%
000030	180R Growth	20020628	1000	20090109	2356.24	44.98%
930902	CSI Big Data	20121231	1000	20161018	3417.69	44.95%
H30357	800R Growth	20041231	1000	20140609	3751.90	44.89%
930734	360 Internet plus	20121231	1000	20150810	7861.83	44.74%
399975	All Share Brokerage	20070629	1000	20130715	788.03	44.50%
930726	CSI Bio-medicine	20120629	1000	20150805	3105.19	44.50%
930613	Non-Cyclical POEs Index	20091231	1000	20150407	1529.82	44.44%
H30588	Securities and Insurance	20091231	1000	20150202	1060.06	44.30%
930928	CSCR New Economic Engine	20130630	1000	20161223	1841.44	44.26%
H30211	All Share Capital Markets	20070629	1000	20130715	783.96	44.18%
000963	CSI Downstream	20041231	1000	20100416	6049.80	44.16%
950107	380 Innovation	20121231	1000	20161019	2187.65	44.13%
930712	CS Internet of things	20120629	1000	20150731	2459.38	44.12%
H30217	All Share Health Care	20041231	1000	20130715	11475.20	44.02%
930987	Anhui Development	20131231	1000	20190320	1700.69	43.73%
H30016	800 Cons. Dura. & App.	20041231	1000	20121221	6936.50	43.68%
L11643	300 Capital Markets	20051231	1000	20090616	504.34	43.59%
930661	CSSW Internet Finance	20111230	1000	20150624	3182.90	43.58%
930693	CSI500 Construction Materials	20041231	1000	20150707	5759.49	43.47%
000135	SSE 180 HB	20020628	3299.1	20120806	6656.96	43.47%
931021	Household & Appliances Top	20141231	1000	20171017	13925.67	43.34%
H30023	800 Capital Markets	20041231	1000	20121221	6183.52	43.24%

I						A
000049	SSE POEs 50	20090630	1000	20090825	1833.22	43.21%
H30029	800 Commu. Equipment	20041231	1000	20121221	4379.38	43.06%
H30260	300 Momentum	20041231	1000	20131121	4302.49	42.85%
000057	SSE Large&Mid&Small Cap growth	20031231	1000	20100104	4249.30	42.73%
H30196	All Share Household Durables	20041231	1000	20130715	7384.38	42.72%
930599	CSI High-End Equipment	20041231	1000	20150302	4684.47	42.71%
930850	CSI IM	20120629	1000	20160720	2550.84	42.66%
930722	CS Internet Platform	20120629	1000	20150805	4110.57	42.49%
930617	Defense Information	20091231	1000	20150416	2378.78	42.47%
H30359	Transforming Growth	20051230	1000	20140711	28576.35	42.40%
399966	800 Fin(ex Banks)	20041231	1000	20121221	6423.75	42.35%
931169	Securities 30	20131231	1000	20190530	1634.54	42.35%
000975	QianJiang 30	20091231	1000	20140102	1355.13	42.17%
H30004	CSI Central Region Industry Top	20041231	1000	20120927	3731.08	41.98%
H50053	SSE Mobile Internet	20120629	1000	20140711	2043.90	41.90%
000806	Consumption and Services	20041231	1000	20120210	8632.63	41.83%
000059	SSE L&M&S Cap relative growth	20031231	1000	20100104	3051.11	41.81%
H30444	1000 Health Care	20041231	1000	20141017	11255.83	41.62%
H30089	CSI Dividend Potential	20051230	1000	20130702	9346.00	41.60%
930984	CSI MG New Economy	20071228	1000	20170615	3044.09	41.39%
H30017	800 Consumer Services	20041231	1000	20121221	8302.21	41.35%
000162	SSE Internet plus	20120629	1000	20151029	2646.03	41.28%
000969	CSI 300 non-Cyclical	20041231	1000	20100528	4517.65	41.27%
931382	CSI 300 Harvest ESG	20151231	1000	20191125	1322.08	41.06%
H11121	Fullgoal Long-Short	20051231	1000	20110726	39510.35	40.87%
930697	All Share Household Appliances	20041231	1000	20150707	9701.47	40.83%
000074	SSE Cons Staples EW	20031231	1000	20100818	7381.42	40.76%
930851	CSI Cloud & Big data	20120629	1000	20160720	4067.25	40.69%
H30446	1000 IT	20041231	1000	20141017	8038.59	40.53%
930884	300 Innovation	20121231	1000	20161019	1412.89	40.42%
930789	CSI M&A Prediction	20111231	1000	20160329	3052.49	40.41%
950049	G60 Component Index	20160524	1000	20191129	1072.63	40.41%
930820	CSI High-End Manufacturing	20041231	1000	20160511	5424.28	40.39%
930882	Zhujiang Delta Coastal Area	20121231	1000	20160817	1992.38	40.29%
H30138	CSI Smart Cities	20120629	1000	20130826	2209.70	40.29%
931265	CSI POEs 300	20090630	1000	20191115	1677.07	40.23%
399813	CSI Defense Security	20081231	1000	20150129	5058.52	40.22%
L11613	300 Machinery	20041231	1000	20090616	5598.96	40.11%
H50025	SSE Cons. Staples Dividend	20051230	1000	20130702	25217.30	40.10%
950085	SSE Internet of things	20120629	1000	20151029	2168.63	39.98%
931058	Competitive Advantage	20121231	1000	20180104	3525.11	39.98%
931166	Health Care and Medical 100	20081231	1000	20190425	4546.31	39.84%
000055	SSE Local State-owned 50	20090630	1000	20100104	1283.51	39.74%
H30400	800 Momentum	20041231	1000	20141113	3812.14	39.68%
931006	CSI Aged Consumption	20091231	1000	20170721	1732.65	39.65%
931033	Hangzhou Bay Area	20091231	1000	20171108	1456.19	39.60%
930611	Small & Medium SOE's Reform	20131231	1000	20150407	1576.14	39.51%
000843	300 Dynamic	20041231	1000	20130107	3048.56	39.29%
L11634	300 Packaged Foods & Meats	20041231	1000	20090616	9155.51	39.29%
H30220	All Share Internet Software	20041231	1000	20130715	5979.98	39.29%
000830	CSI 500 HB	20041231	1000	20120806	4148.40	39.05%
931142	DFH Competitiveness	20091231	1000	20190320	1453.58	39.02%
930760	Snowball Big Data	20121231	1000	20150916	6045.34	38.84%
H30141	CSI Intelligent Transport	20120629	1000	20130826	2488.25	38.83%
931065	CaiTong Zhejiang 30	20141231	1000	20181204	1341.96	38.77%
930662	CSI Modern Agriculture	20101231	1000	20150713	1076.61	38.54%
000913	CSI 300 Health Care	20041231	1000	20070702	10907.05	38.39%

I						A
930729	CSI UnionpaySmart 100	20101231	1000	20150824	6081.50	38.12%
000949	CN Agriculture	20041231	1000	20091028	5742.00	37.93%
H50057	SSE 180 Momentum	20041231	1000	20141113	3403.17	37.88%
000911	CSI 300 Cons Disc	20041231	1000	20070702	5734.80	37.84%
000096	SSE Downstream	20031231	1000	20110510	4338.93	37.82%
930598	CSI Rare Earth Industry	20111231	1000	20150302	1184.31	37.80%
931160	All Share Communications	20041231	1000	20130715	5923.18	37.63%
930618	CSI Insurance	20121231	1000	20150416	2371.13	37.57%
L11620	300 Trans Infrastructure	20041231	1000	20090616	2459.61	37.46%
000983	China IP Index	20060630	1000	20110617	9507.05	37.44%
399805	CSI Internet Finance	20120629	1000	20150210	2803.31	37.38%
000904	CSI 200	20041231	1000	20070115	4090.13	37.37%
H50019	SSE Dividend Return	20051230	1000	20130327	5990.36	37.37%
931140	Health Care 50	20041231	1000	20190320	11679.72	37.36%
399814	CSI Grand Agric	20131231	1000	20140722	1226.13	37.27%
000108	380 Cons Staples	20031231	1000	20110613	10293.15	37.16%
931163	Zhejiang 100	20121231	1000	20190425	1893.57	37.13%
000953	CSI L SOEs	20090630	1000	20100209	1413.20	36.80%
H50006	180 Health Care	20031231	1000	20120629	5985.76	36.79%
930885	500 Innovation	20121231	1000	20161019	2271.50	36.73%
930703	Fujian 50	20121231	1000	20150709	1808.18	36.62%
000812	Machinery Sub-industry	20041231	1000	20120411	4383.57	36.53%
000916	CSI 300 Telecom Svc	20041231	1000	20070702	2946.66	36.52%
000936	CSI Telecom	20041231	1000	20090703	5226.64	36.46%
000808	Health Care	20041231	1000	20120217	10219.72	36.43%
H30216	All Share Marine	20041231	1000	20130715	1397.38	36.41%
H50002	180 Materials	20031231	1000	20120629	1817.13	36.24%
L11515	300 Pharma & Biotech	20041231	1000	20090616	10271.03	36.18%
000300	CSI 300	20041231	1000	20050408	4096.58	36.07%
399983	300 Real Estate EW	20041231	1000	20131122	7896.73	36.01%
931156	CSI 800 Quality	20041231	1000	20190422	11863.06	36.01%
000855	CCTV500	20091231	1000	20141103	1304.39	35.82%
000971	CSI EW 90	20031231	1000	20101202	2939.29	35.82%
931266	POEs Contribution	20131231	1000	20191115	1888.19	35.75%
930939	CSI 500 Quality	20041231	1000	20181121	14733.31	35.62%
000903	CSI 100	20051230	1000	20060529	4317.93	35.54%
000069	SSE Consumer 80	20031231	1000	20100528	4947.89	35.36%
000958	Innovative & Growing	20091231	1000	20100324	1062.14	35.35%
H30537	CSI Taojin 100	20091231	1000	20150121	10794.30	35.22%
930791	Health Care Thematic Index	20041231	1000	20160322	10600.94	35.10%
950101	SSE IM	20120629	1000	20160720	2403.85	35.08%
930720	CS Internet Health Care	20120629	1000	20150805	2994.32	35.00%
000148	leading cons. and serv.	20041231	1000	20120529	8385.51	34.96%
930983	CSI MG 200	20071228	1000	20170615	2193.33	34.89%
H30214	All Share Energy Equipment	20041231	1000	20130715	4431.34	34.87%
H50038	SSE Smart Cities	20120629	1000	20130826	2116.87	34.85%
930733	CS Internet Plus	20120629	1000	20150810	2551.69	34.75%
950074	SSE Internet Finance	20120629	1000	20150529	2443.36	34.73%
H30258	CSI 500 Telecommunication	20041231	1000	20131106	4623.47	34.47%
399809	Insurance Theme	20111231	1000	20150213	2431.17	34.46%
950095	SSE Private Placement	20111231	1000	20160411	1837.98	34.40%
931011	Pharmaceutical Innovation	20121231	1000	20170831	2399.77	34.34%
000991	All Share HealthCare	20041231	1000	20110802	9982.16	34.31%
000844	300 Stability	20041231	1000	20130107	4754.28	34.26%
930938	CSI 500 Profit(E) Growth	20091231	1000	20181204	2618.75	34.26%
931170	POEs Top	20120629	1000	20190425	2133.62	34.25%
931141	Delta Area Index	20121231	1000	20190320	2060.67	34.24%

I						A
000840	CSI ZheJiang Private-owned	20041231	1000	20121109	7153.33	34.15%
H30203	All Share IT Services	20041231	1000	20130715	4796.59	34.00%
H30172	All Share Cons Durables	20041231	1000	20130715	5760.66	33.84%
000994	All Share Telecom	20041231	1000	20110802	6028.41	33.84%
000906	CSI 800	20041231	1000	20070115	4278.53	33.71%
000964	CSI Emerging	20041231	1000	20100430	7801.53	33.66%
000914	CSI 300 Financials	20041231	1000	20070702	6909.12	33.60%
000016	SSE 50	20031231	1000	20040102	3063.22	33.58%
H50033	SSE Urbanization Consumption	20120629	1000	20130826	1878.89	33.54%
H30219	All Share Packaging	20041231	1000	20130715	2782.20	33.51%
930727	CSI Free Trade Zone	20131231	1000	20150805	1602.69	33.43%
930689	CSI500 Coal	20041231	1000	20150707	3676.91	33.22%
950073	SSE Internet	20120629	1000	20150529	2066.27	33.17%
H30124	AZ Active	20071228	1000	20130701	1135.45	32.91%
930937	Sustaining Growth	20061229	1000	20170118	16851.22	32.90%
H30086	800 Financial	20041231	1000	20130509	6767.77	32.80%
931062	Quality and Growth LV	20050630	1000	20180122	12361.84	32.80%
000934	CSI Financials	20041231	1000	20090703	6596.86	32.71%
000952	300 Real Estate	20041231	1000	20091028	9617.19	32.71%
930635	intelligent agriculture	20101231	1000	20150508	1277.89	32.62%
000946	CN Financials	20041231	1000	20091028	7196.08	32.54%
H50015	SSE West Region Industry Top	20031231	1000	20120927	5689.35	32.48%
000818	Financials Sub-industry	20041231	1000	20120411	6849.06	32.47%
930682	CSI500 Food & Beverage	20041231	1000	20150707	8486.21	32.43%
H50058	SSE 380 Momentum	20041231	1000	20141113	5330.13	32.42%
930883	Innovation Driven	20121231	1000	20161019	2288.89	32.41%
000109	380 Health Care	20031231	1000	20110613	10688.59	32.38%
H30137	CSI Urbanization	20120629	1000	20130826	1933.54	32.32%
H30597	New Materials	20081231	1000	20150213	2663.39	32.25%
930956	Green Investing	20120629	1000	20170526	1867.21	32.21%
000814	Health Care Sub-industry	20041231	1000	20120411	9922.05	32.18%
950048	G60 Composite Index	20160524	1000	20191129	1012.88	32.18%
H50056	SSE Smart Home	20120629	1000	20140917	2360.55	32.16%
H50007	180 Financials	20031231	1000	20120629	5712.43	32.14%
000155	Market Value Top 100	20031231	1000	20120720	3004.10	32.01%
000984	CSI 300 Equal Weight	20041231	1000	20110802	4057.22	31.84%
931381	CSI Yangtze River Delta	20121231	1000	20191125	1936.84	31.83%
000839	CSI ZheJiang Composite	20041231	1000	20121109	6364.38	31.83%
931155	CSI 300 Quality	20041231	1000	20190422	9431.97	31.82%
930769	CSI Eastmoney 100	20140131	1000	20151207	4373.96	31.79%
000005	Commercial Index	19930430	1358.8	19930503	2883.17	31.77%
000907	CSI 700	20041231	1000	20070115	4628.02	31.72%
399974	CSI SOEs Reform	20140331	1000	20140807	1572.32	31.71%
931037	Green Leading	20150630	1000	20180104	1008.15	31.71%
000962	CSI Midstream	20041231	1000	20100416	3068.98	31.66%
930732	CS China Manufacture	20120629	1000	20150810	1611.84	31.63%
000123	180 Dynamic	20020628	3299.1	20130208	6793.20	31.49%
000064	SSE non-Cyclical	20031231	1000	20100203	2997.81	31.43%
000956	CSI SOEs 200	20090630	1000	20100209	1203.40	31.36%
931168	ESG Leading	20160630	1000	20190627	1326.96	31.31%
000126	Consumer 50	20041231	1000	20111209	7687.16	31.29%
000981	CSI 300 SEW	20041231	1000	20110613	4842.30	31.24%
H30087	500 Dynamic	20041231	1000	20130509	3582.70	31.16%
000985	CSI All Share	20041231	1000	20110802	4500.13	31.11%
950086	SSE Free Trade Zone	20131231	1000	20151127	1709.44	31.10%
000992	All Share Financials	20041231	1000	20110802	6251.02	31.07%
931069	CICC 300	20081231	1000	20180214	3731.54	31.02%

I						A
000103	SSE Consume	20031231	1000	20110613	8146.33	30.91%
000968	CSI 300 Cyclical	20041231	1000	20100528	3982.63	30.87%
H30179	All Share Pharmaceuticals	20041231	1000	20130715	9431.88	30.85%
930911	AllShareChemicalMaterials	20041231	1000	20161212	5528.88	30.76%
000902	CSI Free Float	20051230	1000	20060227	4745.46	30.75%
930903	China A	19991231	1000	20161018	3079.12	30.75%
000018	180 Financial	20020628	1000	20071210	5750.65	30.73%
930629	CSSW Emerging Health Industry	20081231	1000	20150508	6841.91	30.71%
930822	U. & Inst-related Enterprises	20101231	1000	20160511	1369.66	30.64%
000938	CSI POEs	20090630	1000	20090825	1874.71	30.56%
931377	Economy Growth	20041231	1000	20191226	9069.84	30.53%
L11618	300 Marine	20041231	1000	20090616	1131.89	30.45%
930658	Auto Aftermarket	20111230	1000	20150611	1935.35	30.44%
000010	SSE 180	20020628	3299.1	20020701	8877.77	30.39%
H30353	500R Growth	20041231	1000	20140609	4770.38	30.27%
L11640	300 Pharmaceuticals	20041231	1000	20090616	12036.00	30.22%
H30032	800 Machinery	20041231	1000	20121221	4371.16	30.15%
000939	CSI POEs Growth	20131213	1000	20090825	1605.73	30.11%
H30254	CSI 500 Consumer Staples	20041231	1000	20131106	9432.38	30.08%
000933	CSI Health Care	20041231	1000	20090703	10010.11	30.05%
930659	Energy Internet	20131231	1000	20150611	1481.90	30.05%
000931	CSI Cons Disc	20041231	1000	20090703	4989.80	29.99%
000119	380R Growth	20031231	1000	20111018	4021.13	29.97%
000978	Health Care 100	20041231	1000	20110318	12906.83	29.92%
000125	180 Stability	20020628	3299.1	20130208	10815.54	29.91%
000040	SSE Telecom Svc	20031231	1000	20090109	3142.43	29.85%
000063	SSE Cyclical	20031231	1000	20100203	3501.10	29.81%
931268	Sustainable Development	20140630	1000	20191115	2151.99	29.79%
000841	800 Pharma. & Bio.	20041231	1000	20121221	9920.42	29.76%
H30274	200 Stability	20041231	1000	20140117	5685.17	29.75%
930649	CSI Security and protection	20120629	1000	20150624	2160.41	29.67%
930997	New Energy Vehicles	20141231	1000	20170719	1283.21	29.63%
000038	SSE Financials	20031231	1000	20090109	5646.19	29.59%
930633	CSI Tourism	20081231	1000	20150508	3855.30	29.58%
930758	Phoenix Action 50	20121231	1000	20181121	3626.34	29.51%
000972	300 SSE	20041231	1000	20101202	3717.44	29.48%
930777	Private Placement Index	20111231	1000	20160114	1787.09	29.44%
000137	SSE 380 HB	20031231	1000	20120806	4270.40	29.42%
930725	CSI Internet of Vehicle	20101231	1000	20150805	1217.34	29.27%
930615	Small & Mid Cap Health Care	20041231	1000	20150408	10634.68	29.26%
931066	Military Top	20121231	1000	20180205	2264.36	29.23%
930855	CSI Quality	20050630	1000	20160712	8591.40	29.22%
000159	SH Equities	20031231	1000	20141117	3110.80	29.10%
931133	Economy Blue Chip	20041231	1000	20190320	7186.31	29.08%
H30192	AllSharePackagedFood&Meat	20041231	1000	20130715	6615.04	29.08%
000033	SSE Materials	20031231	1000	20090109	2054.59	29.04%
000147	Select Consumption	20031231	1000	20120529	6751.03	29.04%
H50037	SSE Urbanization	20120629	1000	20130826	1948.49	29.01%
931171	JPM Delta Area Index	20121231	1000	20190610	2067.79	29.01%
H50020	SSE Dividend Potential	20051230	1000	20130702	5776.00	29.00%
H11054	CSI Equips Stimulus	20081231	1000	20090722	1816.83	28.84%
000047	SSE TOTAL MARKET	20031231	1000	20090703	3336.52	28.79%
931089	180ESG	20151231	1000	20181210	1530.02	28.78%
L11611	300 Electrical Equip	20041231	1000	20090616	2543.44	28.78%
000955	CSI SOEs	20090630	1000	20100209	1279.53	28.74%
931070	CICC 100	20081231	1000	20180214	4544.03	28.64%
000122	agriculture theme	20110630	1000	20111018	1301.23	28.62%

I		A				
399959	Defence Index	20110630	1000	20110830	1069.44	28.62%
930783	CSI Yingda Energy Internet	20131231	1000	20160204	1709.21	28.53%
931372	Zhejiang SOEs	20121231	1000	20191209	1793.08	28.50%
H30447	1000 Telecommunication	20041231	1000	20141017	4175.61	28.47%
H30166	All Share Machinery	20041231	1000	20130715	5744.29	28.47%
931129	CSI ROE-PB	20090630	1000	20181204	4380.66	28.43%
H30272	100 Stability	20041231	1000	20140117	4804.02	28.42%
930730	UPA Consumption	20111231	1000	20150824	1901.42	28.39%
000959	Galaxy 99	20041231	1000	20100209	7244.39	28.36%
000161	SSE China Manufacture	20120629	1000	20151029	1623.03	28.32%
000909	CSI 300 Materials	20041231	1000	20070702	2169.14	28.28%
L11502	300 Materials	20041231	1000	20090616	2174.70	28.28%
000067	SSE Emerging	20031231	1000	20100430	7090.15	28.14%
399810	CSSW Media	20041231	1000	20150803	2924.16	28.13%
930708	CSI Nonferrous Metal	20131231	1000	20150713	1170.16	28.08%
930742	CSI E-Commerce	20121231	1000	20150826	3633.51	28.08%
950106	SSE Innovation	20121231	1000	20161019	1280.73	27.86%
H30351	500 Growth	20041231	1000	20140609	5715.31	27.79%
931079	5G Communication	20151231	1000	20190425	870.60	27.71%
000960	CSI Industry Top	20041231	1000	20100209	4125.16	27.70%
930670	CSI500 Commercial Services	20041231	1000	20150707	8063.28	27.61%
931055	Financial Health LV	20050630	1000	20171211	11415.79	27.48%
000842	CSI 800 Equal Weight	20041231	1000	20121221	5309.14	27.44%
H30363	CSI RAFI 500	20041231	1000	20140722	6285.67	27.29%
399802	500 SZSE	20041231	1000	20120905	4778.42	27.23%
000141	380 Dynamic	20031231	1000	20130208	3256.48	27.21%
000090	SSE Free Float	20091231	1000	20101202	1148.71	27.06%
930705	CSI E-Commerce Big Data	20101231	1000	20150722	6143.24	27.00%
000065	SSE Industry Top	20031231	1000	20100209	3251.34	26.98%
399992	CSWD M&A	20111230	1000	20150508	1468.09	26.87%
H50012	SSE Yangtze Industry Top	20031231	1000	20120927	3131.62	26.84%
950083	SSE Yangtze River Delta	20121231	1000	20191022	1913.43	26.75%
399971	CSI Media	20101231	1000	20140415	1379.16	26.70%
H30372	CSI Security	20120629	1000	20140721	2306.72	26.69%
000078	SSE Telecom Svs EW	20031231	1000	20100818	2581.91	26.62%
000043	SSE Mega-cap	20031231	1000	20090423	2545.80	26.60%
000948	CN Real Estate	20041231	1000	20091028	6836.58	26.56%
399965	800 Real Estate	20041231	1000	20121221	6953.30	26.56%
000132	SSE 100	20031231	1000	20120420	5528.46	26.46%
H11053	CSI Textile Stimulus	20081231	1000	20090722	1642.32	26.45%
000846	ESG 100	20110630	1000	20121016	1220.84	26.44%
000048	Responsibility Index	20090630	1000	20090805	1507.78	26.42%
931007	CSI New Generation Consumption	20091231	1000	20170721	1585.69	26.40%
000905	CSI 500	20041231	1000	20070115	5267.66	26.38%
H30068	CSI Culture	20120629	1000	20130326	1781.07	26.37%
H50035	SSE Intelligent Transport	20120629	1000	20130826	1649.48	26.33%
H30261	300 ERC	20041231	1000	20131121	4595.13	26.27%
930632	CSI Rare Metals	20111231	1000	20150512	1129.82	26.23%
000076	SSE Financials EW	20031231	1000	20100818	5197.65	26.23%
930640	CSWD Asset Reorganization	20111230	1000	20150508	1460.70	26.17%
930663	CSI VC	20121231	1000	20150713	2206.06	26.16%
H50014	SSE Central Region Industry Top	20031231	1000	20120927	3302.30	26.08%
000050	SSE 50 EWI	20031231	1000	20110104	2457.61	25.90%
000056	SSE State-owned 100	20090630	1000	20100104	1095.07	25.88%
H30365	CSI Culture & Sport Leisure	20131231	1000	20140721	990.94	25.87%
931054	Financial Health	20050630	1000	20171211	8374.78	25.73%
000852	CSI 1000	20041231	1000	20141017	5567.03	25.67%

I						A
H30525	300SER	20041231	1000	20150106	5307.67	25.59%
H30440	1000 Materials	20041231	1000	20141017	4578.46	25.57%
931374	BOCOM WM Yangtze Delta	20121231	1000	20191022	2252.37	25.53%
000921	CSI 300R Value	20041231	1000	20080121	4185.05	25.51%
H30356	800 Value	20041231	1000	20140609	5808.57	25.51%
H30358	800R Value	20041231	1000	20140609	4874.01	25.50%
H30191	AllShareNon-ferrousMetal	20041231	1000	20130715	2015.68	25.49%
H30034	300 Nonferrous Metal	20041231	1000	20121221	3105.71	25.46%
000802	500 SSE	20041231	1000	20111108	5486.23	25.45%
H11059	CSI Nonferrous Stimulus	20081231	1000	20090722	1725.36	25.43%
000940	Wealth Large	20041231	1000	20090925	5184.70	25.42%
H30362	CSI RAFI 300	20041231	1000	20140722	5963.38	25.37%
000816	Real Estate Sub-industry	20041231	1000	20120411	6350.64	25.32%
000054	SSE Overseas-listing	20061229	1000	20100104	1381.84	25.27%
931023	Beijing 50	20121231	1000	20171030	1523.75	25.20%
930616	CSI Culture & Sport	20120629	1000	20150519	1703.71	25.19%
H30189	All Share Electrical Device	20041231	1000	20130715	4639.77	25.17%
000813	Chemicals Sub-industry	20041231	1000	20120411	2849.72	25.10%
000091	SSE Wealth Mid-Small	20041231	1000	20110406	7981.84	25.06%
000020	SSE Medium Composite	20071228	1000	20080512	1052.51	25.03%
000979	CSI Commodity	20041231	1000	20110822	3736.17	25.01%
000980	CSI Mega-Cap	20041231	1000	20110510	3373.04	25.01%
H50055	SSE Grand Agriculture	20131231	1000	20140722	1347.87	24.98%
H30250	CSI 500 Energy	20041231	1000	20131106	3493.96	24.97%
000051	SSE 180 Equal Weight	20020628	3299.1	20110524	8349.52	24.94%
H30590	CSI Robot	20101231	1000	20150210	1204.54	24.85%
000009	SSE 380	20031231	1000	20101129	4816.61	24.85%
000982	CSI 500 EW	20041231	1000	20110613	6233.36	24.83%
931150	CS Green Quality	20120629	1000	20190131	1908.95	24.83%
931032	Revival 100	20121231	1000	20171106	2347.08	24.82%
000117	380 Growth	20031231	1000	20111018	5079.41	24.81%
399973	CSI Defense	20110630	1000	20140415	1164.64	24.71%
H30188	All Share Pharmaceuticals	20041231	1000	20130715	8889.07	24.57%
950081	SSE 180 Carbon Efficient	20130628	1000	20151008	1730.48	24.55%
931053	HDY Strategy	20081231	1000	20171211	5539.01	24.47%
H30031	800 Nonferrous Metal	20041231	1000	20121221	3867.36	24.37%
000044	SSE MID CAP	20031231	1000	20090703	3419.42	24.37%
399808	CSI New Energy	20111231	1000	20150210	1503.15	24.32%
000966	CSI RAFI 400	20041231	1000	20100602	6008.11	24.31%
000037	SSE Health Care	20031231	1000	20090109	6435.55	24.29%
930847	CS 800 Sector Neutral Low-vol	20041231	1000	20160624	7235.20	24.26%
000811	non-ferrous metal Sub-industry	20041231	1000	20120411	4260.38	24.21%
000919	CSI 300 Value	20041231	1000	20080121	5088.76	24.14%
950080	SSE S&M SOE's Reform	20131231	1000	20150803	1573.43	24.13%
931151	Photovoltaic Industry	20121231	1000	20190422	1684.22	24.08%
930702	Western Development	20121231	1000	20150709	1200.53	24.06%
000805	A Share Resource	20041231	1000	20120106	3750.90	24.06%
930936	GK Growth 50 Index	20140630	1000	20170119	1530.67	24.01%
000989	All Share Cons Disc	20041231	1000	20110802	4569.34	23.81%
000046	SSE MID&SMALL CAP	20031231	1000	20090703	3697.88	23.75%
000115	SSE 380 Equal Weight	20031231	1000	20110812	6219.75	23.70%
H30002	CSI Yangtze Industry Top	20041231	1000	20120927	4037.93	23.67%
930704	Canton's Development	20121231	1000	20150709	1642.94	23.65%
000075	SSE Health Care EW	20031231	1000	20100818	7920.52	23.53%
H50031	SSE Green Cities	20120629	1000	20130826	1672.54	23.53%
H30006	CSI Northeast Region Industry Top	20041231	1000	20120927	3565.71	23.51%
930848	CS 1000 Sector Neutral Low-vol	20041231	1000	20160624	11299.39	23.46%

I						A
931375	300 Quality and Growth LV	20041231	1000	20191125	14057.62	23.38%
H30255	CSI 500 Health Care	20041231	1000	20131106	10793.89	23.36%
000987	All Share Materials	20041231	1000	20110802	2763.84	23.27%
931020	Prefabricated Building	20151231	1000	20171017	847.50	23.26%
H30206	All Share Forest Products	20041231	1000	20130715	2223.49	23.20%
399812	CSI Old-Age Industry	20041231	1000	20140606	7540.75	23.19%
950099	SSE 380 Sector Neutral Low-vol	20041231	1000	20160624	10853.47	23.16%
000121	Health Care theme	20031231	1000	20111018	9469.35	23.15%
H30011	800 Materials	20041231	1000	20121221	2560.80	23.13%
000929	CSI Materials	20041231	1000	20090703	2582.24	23.13%
000008	Conglomerates Index	19930430	1358.8	19930503	2960.31	23.12%
000095	SSE Midstream	20031231	1000	20110510	2673.98	23.11%
000951	300 Banks	20041231	1000	20091028	6440.05	23.04%
L11641	300 Commercial Banks	20041231	1000	20090616	6440.05	23.04%
000045	SSE SMALL CAP	20031231	1000	20090703	3966.20	22.89%
000142	380 Stability	20031231	1000	20130208	6523.71	22.87%
H30204	All Share Hotels & Leisure	20041231	1000	20130715	6876.24	22.81%
H30143	CSI Urbanization infrastructure	20120629	1000	20130826	1708.89	22.78%
000967	CSI RAFI 600	20041231	1000	20100602	5324.85	22.78%
000947	CN Banks	20041231	1000	20091028	6633.34	22.76%
H30022	800 Banks	20041231	1000	20121221	6784.75	22.76%
000027	180 Transportation	20020628	1000	20081215	1113.15	22.75%
000004	Industrial Index	19930430	1358.8	19930503	2397.35	22.74%
000093	SSE 180 Sector Equal Weight	20020628	3299.1	20110524	9770.83	22.72%
930875	Aerospace Defense	20110630	1000	20160817	1494.26	22.71%
H30170	All Share Commercial Services	20041231	1000	20130715	6387.10	22.67%
930694	CSI500 Non-ferrous Metal	20041231	1000	20150707	4118.24	22.67%
399986	CSI Banks	20041231	1000	20130715	6824.51	22.65%
930782	CS 500 Sec-Neu Low-vol	20041231	1000	20160204	12600.84	22.61%
000097	SSE High-End Equipment	20041231	1000	20110524	6437.03	22.50%
000977	Mainland L-C Index	20100630	1000	20110121	1146.48	22.46%
H30074	CSI Services	20041231	1000	20130326	3985.31	22.46%
H30201	All Share Trading Companies	20041231	1000	20130715	3543.78	22.45%
000110	380 Financials	20031231	1000	20110613	3487.55	22.42%
000017	New SSE Index	20051230	1000	20060104	2576.95	22.39%
000002	A Share Index	19901219	100	19920221	3195.98	22.39%
930771	CSI New Energy Industry	20111231	1000	20151216	1675.73	22.35%
000965	CSI RAFI 200	20041231	1000	20100602	4866.32	22.35%
000819	Non-ferrous Metal	20041231	1000	20120509	3781.62	22.31%
000001	SSE Composite	19901219	100	19910715	3050.12	22.30%
H30526	500SER	20041231	1000	20150106	7039.78	22.27%
H30263	Tencent Jian	20130518	1000	20131118	2098.28	22.25%
H30173	All Share Consumer Services	20041231	1000	20130715	6922.82	22.23%
930838	CSI High Dividend Yield	20041231	1000	20160608	5788.98	22.21%
930691	CSI500 Pharmaceuticals	20041231	1000	20150707	9842.17	22.20%
H30091	CSI Materials Dividend	20051230	1000	20130702	5869.93	22.12%
930700	Shanghai's Development	20121231	1000	20150709	2270.47	22.12%
930683	CSI500 Electrical Equipment	20041231	1000	20150707	6172.96	22.05%
H30088	500 Stability	20041231	1000	20130509	7792.75	22.03%
399967	CSI National Defense	20041231	1000	20131226	7763.10	22.02%
931056	CSI Dividend growth	20061231	1000	20171211	5923.45	22.00%
930846	CS 300 Sector Neutral Low-vol	20041231	1000	20160624	5675.44	21.96%
H30354	500R Value	20041231	1000	20140609	6064.61	21.95%
000019	Governance Index	20070629	1000	20080102	1057.08	21.92%
000102	SSE Investment	20031231	1000	20110613	4079.39	21.88%
000099	SSEF 300	20041231	1000	20110701	6136.62	21.87%
H30013	800 Commer. Serv. & Supp.	20041231	1000	20121221	4534.15	21.82%

I						A
000941	CN New Energy	20081231	1000	20091028	1386.43	21.80%
000021	180 Governance	20070629	1000	20080910	985.32	21.79%
H30531	Industrials and Manufacturing	20041231	1000	20141218	2602.16	21.76%
H30165	All Share Real Estate	20041231	1000	20130715	5873.30	21.75%
000957	300 Transportation	20041231	1000	20100317	1444.39	21.75%
930766	Civilian- Military Integration	20120629	1000	20151029	1658.59	21.69%
930614	CSI Environmental Protection50	20111230	1000	20150407	1490.08	21.66%
930718	CSI Shipping	20041231	1000	20150731	1421.57	21.60%
930660	CSSW Sport	20081231	1000	20150624	2086.36	21.57%
H30524	500 ERC	20041231	1000	20150106	6677.53	21.54%
H30001	CSI Bohai Industry Top	20041231	1000	20120927	2613.58	21.53%
930741	CSI Aviation	20111231	1000	20150826	1789.65	21.52%
930650	CSI Ocean Economy	20091231	1000	20150529	1097.93	21.52%
000133	SSE 150	20031231	1000	20120420	4015.09	21.47%
000821	CSI 300 Dividend	20041231	1000	20120720	5962.00	21.28%
H30256	CSI 500 Financials	20041231	1000	20131106	4070.57	21.21%
000146	Select Manufacturing	20031231	1000	20120529	5659.98	21.14%
930684	CSI500 Machinery	20041231	1000	20150707	4976.14	21.08%
930681	CSI500 Pharmaceuticals & Bio	20041231	1000	20150707	11226.30	21.06%
H30139	CSI Green Cities	20120629	1000	20130826	1419.53	21.02%
931373	Dividend Top	20131231	1000	20191115	2263.53	21.00%
930981	Northeast Index	20131231	1000	20170614	1146.19	20.94%
000060	SSE L&M&S Cap relative value	20031231	1000	20100104	3591.53	20.91%
H30200	All Share Transportation	20041231	1000	20130715	2262.81	20.91%
H50068	380 ERC	20041231	1000	20150316	7725.80	20.83%
950087	SSE Ocean Economy	20091231	1000	20151127	737.69	20.80%
H50067	180 ERC	20041231	1000	20150316	4339.82	20.78%
931148	ESG 80	20110630	1000	20190227	1682.20	20.75%
000071	SSE Materials EW	20031231	1000	20100818	2874.02	20.62%
000106	380 Industrials	20031231	1000	20110613	4521.28	20.60%
H50022	SSE Materials Dividend	20051230	1000	20130702	4986.43	20.52%
931052	GuoSen Value	20070629	1000	20171208	2277.19	20.51%
930790	CSI Entertainment	20121231	1000	20160322	1361.29	20.43%
H30140	CSI Urbanization Transport	20120629	1000	20130826	1926.52	20.42%
930852	Quantum Communication	20120629	1000	20160720	2694.13	20.40%
000006	Real Estate Index	19930430	1358.8	19930503	7024.36	20.36%
930901	ACG Index	20121231	1000	20161018	1936.23	20.34%
000838	Innovative & Value	20091231	1000	20120926	1667.20	20.32%
000120	380R Value	20031231	1000	20111018	5783.03	20.32%
950098	SSE 180 Sector Neutral Low-vol	20041231	1000	20160624	5465.68	20.27%
000092	SSE Resource 50	20031231	1000	20110510	2372.63	20.22%
930654	CSI Leisure & Entertainment	20041231	1000	20150605	3657.71	20.02%
930692	CSI500 Chemicals	20041231	1000	20150707	4493.49	20.00%
H30014	800 Transportation	20041231	1000	20121221	1612.10	19.68%
000945	CN Transportation	20041231	1000	20091028	1583.77	19.68%
950096	Shanghai SOEs Index	20121231	1000	20160511	1564.18	19.66%
000827	CSI EP	20111230	1000	20120925	1269.28	19.61%
930619	CSI Gold Miners	20111231	1000	20150416	1094.54	19.60%
000058	SSE Large&Mid&Small Cap value	20031231	1000	20100104	4150.21	19.54%
931355	CSI Cyclical Industry	20081231	1000	20191115	1237.85	19.51%
000029	180 Value	20020628	1000	20090109	4174.71	19.49%
930688	CSI500 Household Durables	20041231	1000	20150707	4557.58	19.45%
H30532	Natural Resource Select	20041231	1000	20141218	2073.81	19.44%
000066	SSE Commodity Equity	20031231	1000	20100430	1657.99	19.43%
H50052	SSE SOEs Reform	20140331	1000	20141028	1512.92	19.28%
000031	180R Value	20020628	1000	20090109	3021.69	19.26%
000925	CSI RAFI 50	20041231	1000	20090226	4471.00	19.21%

I						A
950075	SSE Modern Agriculture	20101231	1000	20150713	1101.56	19.20%
930927	CSCR Bedrock Economy	20050630	1000	20161223	8731.23	19.06%
000062	SSE SHANGHAI enterprises	20051231	1000	20100104	2163.40	18.90%
000926	CSI Central SOEs	20081231	1000	20090330	1846.78	18.89%
000826	CSI Poes Dividend	20090630	1000	20120720	3453.98	18.85%
399991	CSI OBOR	20121231	1000	20150216	1531.52	18.85%
000052	SSE50FI	20031231	1000	20120109	3097.82	18.84%
950094	SSE HIBB	20111231	1000	20160411	1265.85	18.83%
H30098	CSI Telecom Serv. Dividend	20051230	1000	20130702	8554.95	18.75%
950082	SSE Shanghai's Development	20111231	1000	20150803	2698.61	18.70%
H50043	SSE Old-Age Industry	20051230	1000	20140606	8604.58	18.66%
H30171	All Share Transportation	20041231	1000	20130715	1618.92	18.61%
H30209	All Share Building Products	20041231	1000	20130715	3961.87	18.59%
930728	CSI Theme Park	20091231	1000	20150805	1114.36	18.56%
H30344	CSI Health Industry	20111230	1000	20140606	1551.83	18.52%
931013	Consumption Low Volatility	20041231	1000	20171018	11368.18	18.38%
000053	SSE180FI	20020628	3299.1	20120109	11111.36	18.31%
000134	SSE Banks	20071231	1000	20120529	887.81	18.31%
H30095	CSI Health Care Dividend	20051230	1000	20130702	12836.19	18.30%
000831	CSI 500 LB	20041231	1000	20120806	8423.76	18.23%
930620	CSSW One Belt and One Road	20081231	1000	20150423	1701.71	18.20%
000105	380 Materials	20031231	1000	20110613	3749.13	18.07%
931144	Communication Technology	20151231	1000	20190530	915.36	18.06%
H50011	SSE Bohai Industry Top	20031231	1000	20120927	2440.42	18.05%
930717	CSI Education Industry	20131231	1000	20150731	1161.60	18.03%
930860	CSI Earnings Quality	20050630	1000	20160712	7658.91	18.01%
000910	CSI 300 Industrials	20041231	1000	20070702	2266.60	17.91%
H30187	All Share Chemicals	20041231	1000	20130715	3592.46	17.82%
000930	CSI Industrials	20041231	1000	20090703	2696.75	17.66%
H50027	SSE Financials Dividend	20051230	1000	20130702	6287.74	17.61%
H30366	CSI HDY	20041231	1000	20140721	4709.49	17.57%
L11509	300 Media	20041231	1000	20090616	1074.50	17.56%
L11628	300 Media	20041231	1000	20090616	1182.82	17.56%
H50044	SSE Health Industry	20131231	1000	20140606	1155.95	17.51%
930949	Return-based Value	20051230	1000	20170224	13035.42	17.48%
000988	All Share Indu	20041231	1000	20110802	2894.04	17.27%
000100	SSEF 500	20041231	1000	20110701	4898.71	17.24%
H50034	SSE Urbanization infrastructure	20120629	1000	20130826	1617.96	17.23%
000824	CSI Soes Dividend	20090630	1000	20120720	1696.74	17.23%
H30176	All Share Food Retailing	20041231	1000	20130715	9616.48	17.11%
H30252	CSI 500 Industrials	20041231	1000	20131106	4138.83	17.11%
931014	Growth Low Volatility	20041231	1000	20171018	9398.45	17.11%
000128	SSE380FI	20031231	1000	20120109	5923.52	17.09%
930776	Holding-Increase & Buy-Back	20111231	1000	20160114	1785.68	17.04%
000861	SOEs Innovation	20121231	1000	20190516	1727.13	16.94%
H30251	CSI 500 Materials	20041231	1000	20131106	3816.31	16.90%
000801	CSI Resource 80	20041231	1000	20111108	2662.16	16.83%
L11503	300 Capital goods	20041231	1000	20090616	3703.09	16.81%
000107	380 Cons Discretionary	20031231	1000	20110613	4246.23	16.80%
H30012	800 Capital Goods	20041231	1000	20121221	3751.15	16.79%
930672	CSI500 Capital Goods	20041231	1000	20150707	4437.48	16.71%
930985	CSI 500 LBLV	20041231	1000	20170622	11364.92	16.63%
H30169	All Share Capital Goods	20041231	1000	20130715	4124.99	16.62%
H30352	500 Value	20041231	1000	20140609	7395.74	16.60%
930744	CSI Trust	20121231	1000	20150826	1677.92	16.56%
000961	CSI Upstream	20041231	1000	20100416	2224.31	16.54%
H30441	1000 Industrials	20041231	1000	20141017	5095.51	16.53%

I					A	
000098	SSEF 200	20041231	1000	20110701	4476.52	16.52%
931376	Taikang Dividend LV	20071231	1000	20191128	1879.59	16.51%
000803	CSI300VW	20041231	1000	20120109	6752.72	16.43%
950100	SSE High Dividend Yield	20041231	1000	20160712	4009.77	16.37%
930607	CSI Automobiles	20041231	1000	20150331	4405.02	16.35%
930845	CSI Supply-Side	20131231	1000	20160624	1260.61	16.31%
000072	SSE Industrials EW	20031231	1000	20100818	2637.76	16.31%
930699	X&H Asset Reorganization	20111230	1000	20150716	6810.18	16.15%
000901	CSI Well-Off	20051230	1000	20100402	5162.79	16.07%
931138	High Dividend Yield LV	20041231	1000	20181204	9472.76	16.02%
H30269	CSI Dividend Low Volatility	20051230	1000	20131219	8458.09	15.97%
H30096	CSI Financials Dividend	20051230	1000	20130702	7556.82	15.97%
000927	CSI Central SOEs 100	20081231	1000	20090330	1711.36	15.95%
H50054	SSE Culture & Sport Leisure	20131231	1000	20140721	868.12	15.94%
930740	CSI 300 Dividend LV	20041231	1000	20181204	6029.41	15.91%
000922	CSI Dividend	20041231	1000	20080526	4440.59	15.73%
H30092	CSI Industrials Dividend	20051230	1000	20130702	7723.91	15.65%
H30213	All Share Aerospace & Defense	20041231	1000	20130715	6467.11	15.64%
930612	Mixed-Ownership Reform	20131231	1000	20150407	1621.83	15.60%
L11608	300 Defense	20041231	1000	20090616	6787.99	15.53%
000145	Select Resources	20031231	1000	20120529	3197.50	15.48%
000114	Sustainable industry	20110630	1000	20110822	1028.29	15.43%
000035						

I					A	
000136	SSE 180 LB	20020628	3299.1	20120806	8943.52	13.28%
L11642	300 Diversified Financial Svc	20041231	1000	20090616	5723.96	13.25%
000118	380 Value	20031231	1000	20111018	7016.03	13.20%
H30442	1000 Consumer	20041231	1000	20141017	4618.75	13.19%
000859	SOEs Belt and Road	20131231	1000	20190516	1514.01	13.14%
000860	SOEs' Structural Reform	20141231	1000	20180326	976.03	13.06%
H30259	CSI 500 Utilities	20041231	1000	20131106	2832.42	12.83%
H11060	CSI Logistics Stimulus	20081231	1000	20090722	1136.10	12.76%
000026	180 Natural Resource	20020628	1000	20081215	2283.36	12.74%
000822	CSI 500 Dividend	20041231	1000	20120720	7558.42	12.72%
H50036	SSE National Defense	20041231	1000	20131226	5601.43	12.70%
950079	SSE Mixed Ownership Reform	20131231	1000	20150803	1740.43	12.69%
930955	Dividend Low Volatility100	20051230	1000	20170526	9033.82	12.43%
000153	SSE Poes Dividend	20090630	1000	20120720	2257.72	12.26%
H30081	300 Utilities Transport	20041231	1000	20130509	1433.84	12.19%
000160	SSE OBOR	20121231	1000	20150624	1379.64	12.00%
000820	Coal Index	20041231	1000	20120509	2206.68	11.98%
H50003	180 Industrials	20031231	1000	20120629	1970.15	11.85%
000094	SSE Upstream	20031231	1000	20110510	1935.87	11.80%
930677	CSI500 Auto & Components	20041231	1000	20150707	4141.92	11.76%
000149	SSE 180 Dividend	20041231	1000	20120720	3551.81	11.74%
H50040	SSE Dividend Low Volatility	20051230	1000	20140321	7117.59	11.70%
000113	380 Utilities	20031231	1000	20110613	2013.46	11.67%
930673	CSI500 Real Estate	20041231	1000	20150707	3268.43	11.48%
H50016	SSE Northeast Region Industry Top	20031231	1000	20120927	2920.99	11.37%
H50023	SSE Industrials Dividend	20051230	1000	20130702	6687.70	11.32%
950070	SSE Automobiles	20041231	1000	20150421	4155.59	11.07%
H30253	CSI 500 Consumer	20041231	1000	20131106	3319.65	10.90%
399998	CSI Coal	20081231	1000	20150213	1276.05	10.86%
399990	CSI Coal EW	20081231	1000	20150121	1653.79	10.74%
000015	SSE Dividend	20041231	1000	20050104	2751.42	10.67%
H30193	AllShareTextiles&Apparel	20041231	1000	20130715	2999.76	10.65%
H30018	800 Media	20041231	1000	20121221	2475.14	10.36%
000007	Utilities Index	19930430	1358.8	19930503	4942.54	10.33%
H30010	800 Energy	20041231	1000	20121221	2090.37	10.28%
000928	CSI Energy	20041231	1000	20090703	1777.99	10.28%
931273	Hainan Index	20121231	1000	20191018	1014.68	10.23%
H30194	All Share Auto Components	20041231	1000	20130715	4302.20	10.14%
H50024	SSE Cons. Disc. Dividend	20051230	1000	20130702	9252.67	9.99%
930731	Tibet's Development	20121231	1000	20150826	791.76	9.78%
931130	Dividend Growth LV	20051230	1000	20181204	16132.72	9.77%
930701	Jing-Jin-Ji's Development	20121231	1000	20150709	1499.40	9.77%
930687	CSI500 Textiles & Apparel	20041231	1000	20150707	1579.18	9.69%
H30099	CSI Utilities Dividend	20051230	1000	20130702	3120.88	9.25%
H30445	1000 Financials	20041231	1000	20141017	4505.64	8.98%
000079	SSE Utilities EW	20031231	1000	20100818	1923.01	8.85%
H30197	All Share Multiline Retail	20041231	1000	20130715	3273.35	8.67%
H30175	All Share Retailing	20041231	1000	20130715	3367.49	8.32%
H30174	All Share Media	20041231	1000	20130715	2590.41	8.26%
000151	SSE Soes Dividend	20090630	1000	20120720	1239.65	8.23%
930698	CSI Water Resources	20120629	1000	20150731	1500.14	8.18%
000986	All Share Energy	20041231	1000	20110802	1585.63	8.11%
930634	Rural land reform agriculture	20101231	1000	20150508	756.38	8.09%
H50029	SSE Telecom Serv. Dividend	20051230	1000	20130702	7212.33	8.07%
930608	CSI Infrastructure	20041231	1000	20150331	7225.97	8.00%
931008	All Share Automobiles	20041231	1000	20130715	4877.32	7.95%
930642	CSI Nuclear Energy & Power	20041231	1000	20150519	2109.73	7.73%

I						A
H50026	SSE Health Care Dividend	20051230	1000	20130702	6373.22	7.70%
000825	CSI Central Soes Dividend	20081231	1000	20120720	2726.43	7.51%
930686	CSI500 Multiline Retail	20041231	1000	20150707	2689.62	7.48%
H30164	All Share Auto& Components	20041231	1000	20130715	4311.30	7.39%
H30015	800 Auto & Comp.	20041231	1000	20121221	4755.66	7.29%
H11052	CSI Auto Stimulus	20081231	1000	20090722	3380.23	7.29%
931004	CSI Female Consumption	20091231	1000	20170721	1122.80	7.01%
930904	CSI PPP	20131231	1000	20161107	1173.03	6.87%
H30093	CSI Cons. Disc. Dividend	20051230	1000	20130702	11893.53	6.80%
000152	SSE Central Soes Dividend	20081231	1000	20120720	1928.48	6.71%
930621	CSSW High-Speed Railway	20081231	1000	20150423	1891.30	6.65%
000810	Energy Sub-industry	20041231	1000	20120411	1676.39	6.39%
H30208	All Share Specialty Retail	20041231	1000	20130715	6198.03	6.05%
930716	CSI Modern Logistics	20111230	1000	20150731	1066.06	6.02%
930853	CSI Sponge Cities	20120629	1000	20160720	1158.21	5.67%
H50030	SSE Utilities Dividend	20051230	1000	20130702	3592.26	5.50%
H30218	All Share Water Utilities	20041231	1000	20130715	1889.39	5.42%
000104	380 Energy	20031231	1000	20110613	1005.31	5.42%
930982	Poverty Alleviation Index	20121231	1000	20170614	1118.19	5.38%
H30090	CSI Energy Dividend	20051230	1000	20130702	3363.48	5.38%
950071	SSE Infrastructure	20041231	1000	20150421	7711.43	5.16%
930675	CSI500 Media	20041231	1000	20150707	3620.71	5.01%
000943	CN Infrastructure	20041231	1000	20091028	1741.83	4.97%
000950	300 Infrastructure	20041231	1000	20091028	1856.58	4.94%
000070	SSE Energy EW	20031231	1000	20100818	1824.17	4.92%
000995	All Share Utilities	20041231	1000	20110802	1998.12	4.61%
930835	EP Patents 50	20131231	1000	20160518	1063.91	4.27%
000025	180 Infrastructure	20020628	1000	20081215	1698.52	4.24%
399806	Environ-governance	20111230	1000	20140721	1430.82	4.20%
930641	CSI Traditional Chin Med	20041231	1000	20150519	8232.17	4.03%
H50010	180 Utilities	20031231	1000	20120629	1684.00	3.96%
000908	CSI 300 Energy	20041231	1000	20070702	1538.76	3.92%
L11501	300 Energy	20041231	1000	20090616	1524.85	3.92%
L11506	300 Auto & Component	20041231	1000	20090616	4782.76	3.72%
H50032	SSE Urbanization Transport	20120629	1000	20130826	1678.92	3.61%
H30448	1000 Utilities	20041231	1000	20141017	2646.29	3.54%
000041	SSE Utilities	20031231	1000	20090109	1919.44	3.41%
930674	CSI500 Retailing	20041231	1000	20150707	2506.56	3.25%
H30030	800 Utilities	20041231	1000	20121221	1861.34	2.77%
000937	CSI Utilities	20041231	1000	20090703	1975.84	2.77%
H30019	800 Retailing	20041231	1000	20121221	2732.97	2.71%
L11631	300 Specialty Retail	20051230	1000	20090616	5567.96	2.64%
L11510	300 Retail	20041231	1000	20090616	3767.31	2.59%
000032	SSE Energy	20031231	1000	20090109	1255.71	2.45%
H30199	All Share Electric Utilities	20041231	1000	20130715	2102.68	2.09%
H30222	All Share Road & Rail	20041231	1000	20130715	2979.32	1.88%
000917	CSI 300 Utilities	20041231	1000	20070702	1832.73	1.86%
L11525	300 Utilities	20041231	1000	20090616	1840.09	1.86%
L11655	300 Electric Utilities	20041231	1000	20090616	1870.39	1.86%
930685	CSI500 Construction	20041231	1000	20150707	3000.90	-0.09%
930854	CS Water ET	20120629	1000	20160720	1019.41	-0.60%
399807	High-Speed Railway	20121231	1000	20150120	1420.87	-1.08%
H30020	800 Food & Stap. Retailing	20041231	1000	20121221	12302.65	-1.16%
H50001	180 Energy	20031231	1000	20120629	1339.44	-1.46%
930606	CSI Steel	20081231	1000	20150331	944.41	-1.57%
399817	Ecology 100	20120629	1000	20151021	1053.82	-1.90%
931149	CS Environ-Quality	20120629	1000	20190131	1373.21	-2.02%

I						A
931022	Atmospheric Protection	20111231	1000	20171017	1405.98	-2.39%
H50021	SSE Energy Dividend	20051230	1000	20130702	4502.66	-2.84%
H30195	All Share Construction	20041231	1000	20130715	3731.88	-3.27%
399995	Const-Engineering	20041231	1000	20150312	3805.36	-4.02%
H30439	1000 Energy	20041231	1000	20141017	446.24	-4.83%
H30198	All Share Oil & Gas	20041231	1000	20130715	1515.64	-5.10%
000112	380 Telecommunication	20031231	1000	20110613	5437.28	-5.25%
L11610	300 Construction	20041231	1000	20090616	3540.16	-5.42%
H11051	CSI Steel Stimulus	20081231	1000	20090722	670.62	-6.22%